

CME

ACG Clinical Guideline: Alcohol-Associated Liver Disease

Loretta L. Jophlin, MD, PhD^{1,*}, Ashwani K. Singal, MD, MS, FACP^{2,*}, Ramon Bataller, MD, PhD, FACP³, Robert J. Wong, MD, MS, FACP⁴, Bryan G. Sauer, MD, MSc, FACP⁵, Norah A. Terrault, MD, MPH, FACP⁶ and Vijay H. Shah, MD, FACP⁷

ABSTRACT

Alcohol-associated liver disease (ALD) is the most common cause of advanced hepatic disease and frequent indication for liver transplantation worldwide. With harmful alcohol use as the primary risk factor, increasing alcohol use over the past decade has resulted in rapid growth of the ALD-related healthcare burden. The spectrum of ALD ranges from early asymptomatic liver injury to advanced disease with decompensation and portal hypertension. Compared with those with other etiologies of liver disease, patients with ALD progress faster and more often present at an advanced stage. A unique phenotype of advanced disease is alcohol-associated hepatitis (AH) presenting with rapid onset or worsening of jaundice, and acute on chronic liver failure in severe forms conveying a 1-month mortality risk of 20%–50%. The model for end stage disease score is the most accurate score to stratify AH severity (>20 defined as severe disease). Corticosteroids are currently the only available therapeutic with proven efficacy for patients with severe AH, providing survival benefit at 1 month in 50%–60% of patients. Abstinence of alcohol use, a crucial determinant of long-term outcomes, is challenging to achieve in ALD patients with concurrent alcohol use disorder (AUD). As patients with ALD are rarely treated for AUD, strategies are needed to overcome barriers to AUD treatment in patients with ALD and to promote a multidisciplinary integrated care model with hepatology, addiction medicine providers, and social workers to comprehensively manage the dual pathologies of liver disease and of AUD. Liver transplantation, a definitive treatment option in patients with advanced cirrhosis, should be considered in selected patients with AH, who are unresponsive to medical therapy and have a low risk of relapse to posttransplant alcohol use. Level of evidence and strength of recommendations were evaluated using the Grading of Recommendations, Assessment, Development, and Evaluations system. This guideline was developed under the American College of Gastroenterology Practice Parameters Committee.

KEYWORDS: ALD; AH; cirrhosis; transplantation; mortality

Am J Gastroenterol 2024;119:30–54. <https://doi.org/10.14309/ajg.000000000002572>; published online September 1, 2023

INTRODUCTION

Alcohol-associated liver disease (ALD) is a leading cause of preventable liver-related morbidity and mortality worldwide, including the United States. Harmful drinking (≥ 3 drinks/d or ≥ 21 /wk in men and ≥ 2 drinks/d or ≥ 14 /wk in women) is a risk factor for liver damage and ALD and often occurs in the setting of alcohol use disorder (AUD) (1,2). This pattern of alcohol use is associated with negative social and/or health consequences. The spectrum of ALD ranges from steatosis and steatohepatitis to progressive fibrosis, cirrhosis, and hepatocellular carcinoma (HCC) and includes the unique presentation of alcohol-associated hepatitis (AH), with development of acute on chronic liver failure (ACLF) in more severe forms (Figure 1). The diagnosis of ALD requires identification of chronic, harmful alcohol use, by patient report or detection of alcohol biomarkers, and exclusion of other diseases affecting the liver. It should

be acknowledged that harmful alcohol use can accelerate progression of other hepatic diseases including metabolic dysfunction-associated steatotic liver disease (MASLD). Individuals with early ALD may be asymptomatic, with steatosis or steatohepatitis and early stage fibrosis. Advanced patients with ALD may have advanced fibrosis including cirrhosis, complications of cirrhosis with decompensating events (ascites, hepatic encephalopathy, variceal bleeding, and HCC), or symptomatic AH with jaundice and/or ACLF (1). Treatment of AUD with achievement of sustained abstinence is the most effective strategy to prevent disease progression and improve long-term outcomes at any stage of ALD. Liver transplantation (LT) remains a definitive treatment option for patients with end-stage liver disease due to alcohol-associated cirrhosis and/or HCC.

Important advances in our understanding of ALD have occurred, including (i) insights into the natural history and prevalence

¹Division of Gastroenterology, Hepatology and Nutrition, University of Louisville Health, Louisville, Kentucky, USA; ²Division of Gastroenterology and Hepatology, University of South Dakota, Sioux Falls, South Dakota, USA; ³Liver Unit, Department of Digestive and Metabolic Diseases, Hospital Clinic, Barcelona, Spain; ⁴Division of Gastroenterology and Hepatology, Stanford University School of Medicine, Veterans Affairs Palo Alto Healthcare System, Palo Alto, California, USA; ⁵Division of Gastroenterology and Hepatology, University of Virginia, Charlottesville, Virginia, USA; ⁶Division of Gastrointestinal and Liver Diseases, University of Southern California, Los Angeles, California, USA; ⁷Division of Gastroenterology and Hepatology, Mayo Clinic, Rochester, Minnesota, USA. **Correspondence:** Vijay H. Shah, MD. E-mail: shah.vijay@mayo.edu.

*Loretta L. Jophlin and Ashwani K. Singal contributed equally to this work.

Received April 19, 2023; accepted October 4, 2023

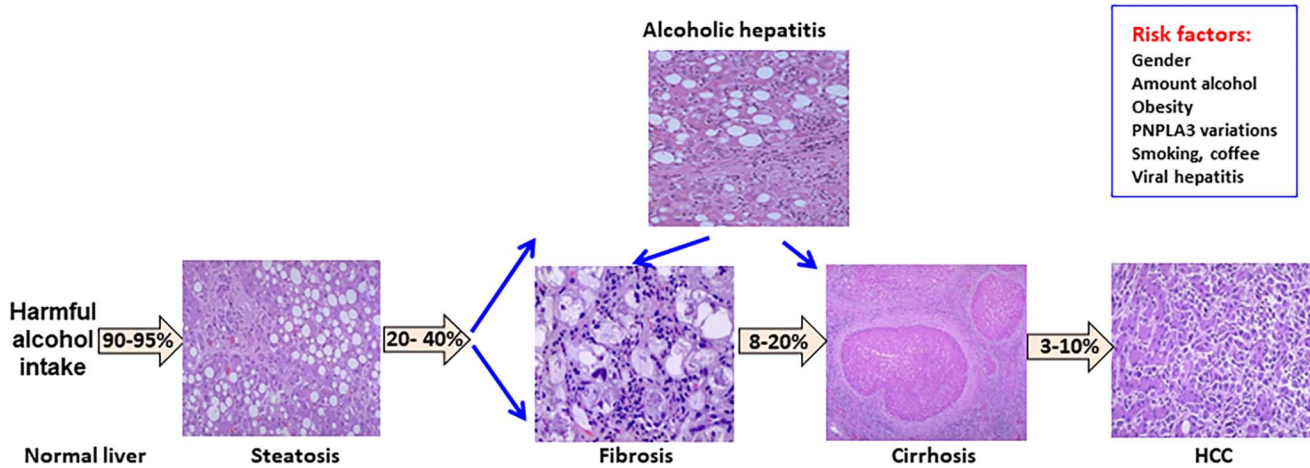


Figure 1. Disease spectrum of alcohol-associated liver disease. HCC, hepatocellular carcinoma.

of early ALD among at-risk individuals with harmful alcohol use or AUD; (ii) increasing prevalence of severe forms of ALD in younger individuals, women, and minorities such as Hispanics and American Indians; (iii) genetic and environmental factors that influence disease susceptibility and progression; (iv) noninvasive techniques to assess liver fibrosis in patients with early ALD; (v) identifying patients at high risk of disease progression; (vi) clinical criteria for diagnosis of AH simplifying decisions on treatment and recruitment in clinical trials; (vii) benefits of early liver transplantation (LT) (i.e., with <6 months of alcohol abstinence) with increasing momentum on acceptability and refinement of selection criteria for this salvage therapeutic option in patients with severe AH; and (viii) the role of multidisciplinary integrated clinical care models including hepatology and addiction specialists to manage the dual pathologies of liver disease and of AUD, respectively, to improve long-term outcomes of patients with ALD. Although significant progress has been made in the therapeutic pipeline for patients with ALD and AH, continued efforts are critical in the development of effective pharmacotherapeutic options.

The authors were invited by the Board of Trustees and Practice Parameters Committee of the American College of Gastroenterology (ACG) to develop this practice guideline document on the management of patients with ALD. Recommendations based on patient-intervention-comparison-outcome (PICO) format/Grading of Recommendations, Assessment, Development, and Evaluations (GRADE) analysis are summarized in Table 1. These recommendations and guidelines should be tailored to individual patients and circumstances in routine clinical practice. Key concepts and recommendations based on author expert opinion and review of literature are summarized in Table 2.

To develop these guidelines, a search was performed on the Ovid search platform: Epub Ahead of Print, In-Process & Other Non-Indexed Citations, Ovid MEDLINE(R) Daily and Ovid MEDLINE(R), EBM Reviews Cochrane Central Registry of Controlled Trials, EMBASE, and PsycInfo for the period January 1980 to December 2022. Where appropriate, the PICO method was used as a means of addressing key clinical questions specific to patients with ALD. When a PICO format was not appropriate, the area of interest was included as a statement or key concept. To evaluate the level of evidence and strength of recommendations, we used the GRADE system, as suggested by the ACG Practice

Parameters Committee. The strength of recommendation is graded as strong or conditional as a consensus among the authors, considering the weight of desirable and undesirable effects of intervention. The level of evidence was determined by members of the GRADE team at ACG (R.J.W. and B.G.S.), and this determination was made independently of the other authors, and designated as high, moderate, low, and very low, considering the confidence in the effect estimate based on current literature.

EPIDEMIOLOGY AND DISEASE BURDEN

Key concept/statement

1. ALD is a major cause of advanced liver disease and liver-related mortality globally, including the United States.

ALD is one of the main causes of chronic liver disease worldwide and is the leading cause of liver-related mortality in the United States (3). Globally, there are 3 million deaths annually attributed to harmful alcohol use, accounting for 5.3% of all deaths and 13.5% of deaths in people aged 20–39 years (4). According to the National Institute of Alcoholism and Alcohol Abuse (NIAAA) Surveillance Report on mortality in 2019, cirrhosis was the 11th leading cause of death in the United States, with about half of cirrhosis-related deaths due to alcohol (5). The crude death rate from cirrhosis of any etiology was 14.6 deaths per 100,000 persons, whereas the rate from alcohol-associated cirrhosis was 7.3 per 100,000 (5). There has been a continued narrowing of the gender gap, with increasing numbers of women with ALD. The World Health Organization has established a future goal of reducing the death rate from cirrhosis to below 8.2 deaths per 100,000 population (3).

Key concepts/statements

2. ALD prevalence has increased since 2014, with an accelerated trajectory in recent years, producing substantial healthcare and economic burden (6).
3. Younger adults, women, and minorities have seen the largest increase in AUD and ALD, highlighting key populations in need of targeted prevention and treatment efforts.

Table 1. Recommendations**Risk factors for alcohol-associated liver disease (ALD)**

1. In patients with heavy alcohol use, we recommend abstaining from use of tobacco in any form given the associated higher risk of cirrhosis (strong recommendation, very low level of evidence)
2. In persons with obesity, we recommended avoiding consumption of alcohol (strong recommendation, moderate level of evidence)
3. To assist with weight optimization and glucose control in persons with obesity or type 2 diabetes, we suggest abstinence from alcohol use (conditional recommendation, very low level of evidence)
4. In patients undergoing or with a history of gastric bypass surgery, we recommend avoidance of heavy alcohol use (strong recommendation, very low level of evidence)
5. In patients with chronic hepatitis C virus infection, we recommend avoiding consumption of alcohol (strong recommendation, high level of evidence)
6. In patients with chronic hepatitis B virus infection, we recommend avoiding consumption of alcohol (strong recommendation, low level of evidence)

Diagnosis and treatment of alcohol use disorder (AUD)

7. In adults being screened for alcohol use, we recommend the use of brief screening tools, such as the Alcohol Use Disorders Identification Test-Consumption tool (strong recommendation, high quality of evidence)
8. In patients with ALD and AUD, we recommend incorporating brief motivational interventions into clinical care (strong recommendation, low quality of evidence)
9. In patients with compensated ALD, we recommend use of baclofen as an option for treatment of AUD (strong recommendation, moderate level of evidence)
10. In patients with compensated ALD, we suggest use of acamprosate or naltrexone as an option for treatment of AUD (conditional recommendation, very low level of evidence)
11. In patients with compensated ALD, we suggest use of gabapentin or topiramate as an option for treatment of AUD (conditional recommendation, very low level of evidence)
12. We suggest against the use of disulfiram in the treatment of AUD along any spectrum of ALD (conditional recommendation, very low level of evidence)
Disulfiram should not be used in the treatment of AUD along any spectrum of ALD (conditional recommendation, very low level of evidence)
13. In patients with ALD and severe alcohol withdrawal syndrome, we recommend cautious use of benzodiazepines as treatment of choice, and careful monitoring given their potential to precipitate or exacerbate hepatic encephalopathy (strong recommendation, moderate level of evidence)

Management of ALD

14. In persons with ALD, we recommend offering integrated multidisciplinary care models that incorporate behavioral and/or pharmacotherapy for treatment of AUD (strong recommendation, low level of evidence)

Alcohol-associated hepatitis (AH)

15. In hospitalized patients with severe AH, we recommend against universal administration of prophylactic antibiotics (strong recommendations, moderate level of evidence)
16. In patients with AH who are malnourished or unable to meet their caloric requirements through oral nutrition alone, we recommend the addition of oral nutritional supplements (ONS). In patients who remain unable to meet their caloric requirements despite ONS, we recommend enteral nutrition support (strong recommendation, moderate level of evidence)
17. In patients with severe AH (model for end stage disease >20), we recommend treatment with corticosteroid therapy (strong recommendation, moderate level of evidence)
18. We recommend against the use of pentoxifylline for individuals with severe AH (strong recommendation, moderate level of evidence)
19. There are insufficient data to determine the role of granulocyte colony stimulating factor and microbiome-based therapies in the treatment of severe AH (conditional recommendation, moderate level of evidence)
20. We recommend use of intravenous N-acetyl cysteine as an adjuvant to corticosteroids in patients with severe AH (strong recommendation, moderate level of evidence)
21. In patients with severe AH who are unresponsive to medical management with high risk of death, early liver transplantation for highly selected patients should be considered according to regional and institutional protocols (conditional recommendation, low level of evidence)

Alcohol contributes to approximately 48% of cirrhosis-related hospitalizations and more than 40% of listings for LT in the United States (7–10). The LT activity increased by >50% for AH with a 4-fold increase between 2003 and 2018 among those aged younger than 40 years (7,8). An increase in LT for ALD has been evident since 2014, reflecting a decreased LT need for hepatitis C virus (HCV) because of availability of direct-acting antivirals, a true increase in the incidence of ALD, and wider acceptance of LT for severe AH (11). The COVID-19 pandemic further increased the healthcare burden of ALD secondary to a 14% rise in alcohol use over prior years, resulting in increased ALD mortality and

ALD-related transplant listing during and after the pandemic (8,12,13). Overall, AUD-related mortality rates increased during the pandemic by 24.8% in 2020 and 22% in 2021 compared with prepandemic rates (14). Hospitalizations for ALD have also increased especially among younger individuals, women, and minorities such as American Indians and Hispanics (9,15). Women are less likely to use AUD therapies and prevention services than men, possibly related to more perceived stigma, conflicting child/family and personal needs, and financial barriers (16). A modeling study showed that the 1-year increase in alcohol consumption during the COVID-19 pandemic could result in 8,000

Table 2. Key concepts and statements**Epidemiology and disease burden**

1. Alcohol-associated liver disease (ALD) is a major cause of liver disease and liver-related mortality globally including the United States
2. ALD prevalence has increased since 2014, with an accelerated trajectory during the COVID-19 pandemic era, producing substantial healthcare and economic burden
3. Younger adults, women, and minorities have seen the largest increase in alcohol use disorder (AUD) and ALD, highlighting key populations in need of targeted prevention and treatment efforts

Risk factors for ALD

4. Amount and duration of alcohol use are the primary risk factors for the development of ALD, and the potential harms of alcohol use should be an integral part of education on liver health
5. Daily heavy alcohol use and binge alcohol use increase the risk of advanced liver disease in those with liver disease other than ALD, such as metabolic dysfunction-associated steatotic liver disease (MASLD) and viral hepatitis. Thus, patients with known liver disease should be counseled on the potential harms of alcohol use
6. There are insufficient data to determine whether binge drinking without daily heavy use predisposes to advanced forms of ALD
7. All types of alcohol increase the risk of liver disease; however, limited data suggest that risk may be higher with liquor as opposed to beer or wine
8. Genetic variants of α -1 antitrypsin, PNPLA3, TM6SF2, and MBOAT7 have been associated with risk of ALD, but there are insufficient data to support their inclusion in clinical management algorithms
9. Persons with obesity or type 2 diabetes should consider abstinence from alcohol use to assist with weight optimization and glucose control

Diagnosis and treatment of AUD

10. Standardized screening practices for AUD should be implemented at every medical encounter, across diverse clinical settings, including the primary care setting, with attention to conducting screening in a nonbiased manner
11. Alcohol biomarkers may be a useful adjunct to clinical inquiry and alcohol use surveys. The choice of test should be tailored to the suspected window of alcohol use
12. Alcohol withdrawal syndrome (AWS) in persons with AUD and ALD should be assessed and managed as per the Clinical Institute Withdrawal Assessment-Alcohol-revised (CIWA-Ar) protocol. Clinicians should be aware to differentiate it from hepatic encephalopathy and acknowledge that the 2 conditions can coexist

ALD disease spectrum

13. Noninvasive blood and/or radiological tests (NITs) should be used to assess the severity of fibrosis in persons with asymptomatic alcohol-associated liver disease. Fibrosis-4 (FIB-4) score, a blood-based marker, and hepatic transient elastography are best NITs for fibrosis detection among persons with ALD
14. Persons with heavy drinking who have evidence of ALD detected with NITs should be counseled on the risk of progressive liver disease and referred to a hepatology specialist for further management
15. Liver biopsy is not required for staging of fibrosis but may be needed if there is diagnostic uncertainty based on noninvasive assessment
16. Screening individuals with heavy drinking using NITs for the detection of early ALD is cost-effective

Management of ALD

17. Patients with cirrhosis due to ALD are managed similarly to those with due to other causes
18. Patients with complications of ALD cirrhosis should be referred for liver transplantation

Alcohol-associated hepatitis (AH)

19. The National Institute of Alcoholism and Alcohol Abuse (NIAAA) diagnostic criteria are a useful guide to making a probable diagnosis of AH, and those meeting criteria can be treated with corticosteroids if eligible or recruitment into clinical trials. A liver biopsy is not required to make a diagnosis of AH in the absence of confounding factors
20. Individuals with severe AH, defined by model for end stage disease (MELD) >20 , have a high short-term mortality and should preferably be hospitalized for management
21. Individuals with moderate alcohol hepatitis, defined by MELD ≤ 20 , have significant morbidity and mortality. Studies are needed to study this phenotype including newer effective drugs for patients with moderate AH
22. Sustained abstinence is associated with long-term survival after severe and moderate AH.
23. For patients with AH, MELD score >20 can be used to stratify disease severity, predict risk of short-term mortality, and guide use of corticosteroid therapy
24. A caloric intake goal of 35 kcal/kg/d with 1.2–1.5 g/kg of protein is recommended for patients with AH. Those patients consuming <21 kcal/kg/d should receive nutritional support preferably through oral/enteral routes
25. Thiamine, vitamin B12, and zinc deficiencies are common in individuals with AH and should be supplemented
26. Patients with severe AH and MELD scores ranging from 25 to 39 derive maximum benefit from the use of corticosteroids; careful consideration of risks and benefits is warranted if considering corticosteroids for those with MELD >50

Table 2. (continued)**Alcohol-associated hepatitis (AH)**

27. Response to corticosteroid treatment can be assessed based on the Lille score at day 7 or day 4. Among nonresponders (Lille score .0.45), corticosteroids should be discontinued.

Liver transplantation (LT)

28. For patients with severe AH with 4 or more organ failures, who are nonresponsive to corticosteroids, and ineligible for early LT, engagement of palliative therapy would be appropriate.

29. Selection for LT in patients with ALD should not be based solely on an arbitrary duration of sobriety. A detailed psychosocial evaluation by a social worker and an addiction specialist should be used to inform the transplant team's decision-making.

30. Tools such as Stanford Integrated Psychosocial Assessment Tool (SIPAT), High Risk for Alcohol Relapse Score (HRAR), Michigan Alcoholism Prognostics Score (MAPS), Hopkins Psychosocial Score (HPSS), and Sustained Alcohol Use Posttransplant Score (SALT) may be used in assessing LT candidacy.

31. Multidisciplinary integrated care model is recommended for liver transplant recipients to reduce recurrent alcohol use and improve long-term outcomes.

32. Liver transplant recipients should be monitored for alcohol use using self-report tools or alcohol biomarkers with the goal of early detection to provide interventions to support return to abstinence.

33. Early and/or heavy alcohol use is a risk for graft loss and long-term patient mortality and requires an aggressive intervention to achieve abstinence.

Policy and prevention

34. Public policy interventions can reduce the burden of AUD and alcohol-associated liver complications and should be more widely used to reduce alcohol-related morbidity and mortality.

additional ALD-related deaths, 18,700 cases of decompensated cirrhosis, and 1,000 new diagnoses of HCC between 2020 and 2040 (17). From 2010 to 2016, ALD had the highest economic cost burden for hospitalizations of any etiology of liver disease in the United States, with a total cost of \$22.7 billion (95% confidence interval [CI] \$22.1–\$23.2 billion), and although hospitalizations for hepatitis B virus (HBV), HCV, MASLD, and HCC down trended or remained stable over this time, there was a near doubling of hospitalization for ALD (6). These figures become more relevant considering that ALD contributes to 50% of overall burden of liver disease but only receives 5% of the mean research funding (18).

RISK FACTORS FOR ALD**Key concepts/statements**

4. Amount and duration of alcohol use are the primary risk factors for the development of ALD, and the potential harms of alcohol use should be an integral part of education on liver health.
5. Daily use and bingeing of alcohol increase the risk of advanced liver disease in those with underlying liver disease other than ALD. Thus, patients with known liver disease should be counseled on the potential harms of any alcohol use.
6. There are insufficient data to determine whether binge drinking without daily heavy use predisposes to advanced forms of ALD.

Harmful drinking is a pattern of alcohol use leading to health or psychosocial problems and is the primary risk factor for the development of ALD (19). Increasing evidence suggests that there are minimal or even no health benefits to drinking and that any amount of alcohol use has potential to cause harm; however, it is estimated that only 10%–20% of individuals with chronic heavy alcohol use develop cirrhosis (20). There is a dose-dependent and duration-dependent relationship between the amount of alcohol intake and the likelihood of developing advanced forms of ALD (21–23), yet extensive individual variability exists because of

genetic factors and the existence of comorbidities (e.g., metabolic syndrome). Furthermore, patients with early ALD are reported to consume similar amounts of alcohol to those with AH, suggesting that there are other factors (Figure 1) which contribute to the risk for and severity of ALD (24). Those factors may include sex and drinking outside of meals. For example, in the Million Women UK Study, among women who drank, drinking with meals carried a 31% lower relative risk for cirrhosis when compared with usually drinking outside of meals (23). Women are at a higher risk for ALD at a lower daily intake of alcohol compared with men, probably due to higher body fat component and lower gastric alcohol dehydrogenase activity (25). *Binge drinking* (see Table 3 for this and other definitions of alcohol use patterns) is reported in 26% of individuals aged 18 years or older in the United States (19). It is speculated that higher blood alcohol levels with binge and *high intensity drinking* promote bacterial translocation (26) and liver fibrosis (27); however, the exact role of binge drinking as a risk factor for cirrhosis remains to be established (28). Although daily drinking is associated with higher risk of cirrhosis (29), it is plausible that *heavy drinking* with superimposed binge and high intensity drinking have additive effects. Importantly, binge drinking in patients with underlying metabolic syndrome has been associated with higher likelihood of cirrhosis (30).

Key concept/statement

7. All types of alcohol increase the risk of liver disease; however, limited data suggest that risk may be higher with liquor as opposed to beer or wine.

Large epidemiological studies have suggested that wine or beer consumption, perhaps due to antioxidant properties, is less associated with ALD than liquor-based drinking (31,32). However, a study of 43,242 men conscribed to military service in Sweden in 1970 with follow-up data obtained from population-based registries showed only a trend toward reduced risk for severe liver

Table 3. Definitions of alcohol drink and patterns of alcohol use

Organization	Terms	Definition
HHS	One standard drink	A beverage containing approximately 14 g (0.6 fluid ounces) of pure ethanol (i.e., alcohol), corresponding to 12 fluid ounces of regular beer (5% alcohol), 5 fluid ounces of wine (12% alcohol), or 1.5 fluid ounces of 80 proof distilled spirits (40% alcohol)
HHS	Moderate alcohol use	#2 drinks a day for men or #1 drink a day for women (280)
NIAA	Heavy alcohol use	.4 drinks on any day or .14 drinks per wk for man and .3 drinks a day or .7 drinks a wk for woman
SAMHSA	Heavy alcohol use	Binge drinking on 5 or more days in the past month
NIAA	Binge drinking	Alcohol use resulting in blood alcohol concentrations of .08% (0.08 g/dL) corresponds to consumption of 5 drinks in men or 4 drinks in women within a 2-h window
NIAA	High intensity drinking	Alcohol intake \geq 2-fold the threshold for binge drinking

HHS, US Department of Health and Human Services; NIAAA, National Institute of Alcoholism and Alcohol Abuse; SAMHSA: Substance Abuse and Mental Health Services Administration.

disease in men consuming more than 50% of alcohol as wine compared with those consuming <1% of alcohol as wine (hazard ratio [HR] 0.70, 95% CI 0.48–1.02, $P = 0.06$) (33). Studies are needed to examine the effects of specific alcohol additives and adulterants on the likelihood or severity of ALD.

Key concept/statement

8. Genetic variants of α -1 antitrypsin, PNPLA3, TM6SF2, and MBOAT7 are associated with risk of ALD, but there are insufficient data to support their inclusion in clinical management algorithms.

Earlier studies have shown that monozygotic twins have a higher concordance for alcohol-associated cirrhosis than dizygotic twins (34). Significant variant alleles conveying risk for the development and severity of ALD include the patatin-like phospholipase domain containing protein 3 (PNPLA3) rs738409, transmembrane 6 superfamily member 2 (TM6SF2), and membrane bound O-acyltransferase domain containing 7 (MBOAT7) rs641738 (35,36). Interestingly, the combination of polymorphisms of some of these genes in the presence of diabetes predicts the development of cirrhosis (37). Variations in PNPLA3 also predispose to the development of HCC in patients with alcohol-associated cirrhosis (36,38). In another study, the Pi*Z homozygous variant of α -1 antitrypsin gene in individuals with AUD was more frequently present in those with cirrhosis compared with those without cirrhosis (6.2% vs 2.2%, $P < 0.001$), with a 5.8-fold (95% CI 2.9–11.7)-adjusted risk for cirrhosis, whereas the Pi*S homozygous variant only trended toward risk of cirrhosis with an adjusted odds ratio of 1.47 (95% CI 0.99–2.19) (39). It should be acknowledged that these genetic association studies are mostly performed in White and/or Asian populations, with very little representation of Black, Native American, and Hispanic populations. Less is known about the genetic determinants of AH; however, the PNPLA3 rs738409 variant has shown an association with its development (40) and mortality (41). Thus, larger studies of this allele are warranted in patients with AH.

Recommendation

1. In patients with heavy alcohol use, we recommend abstaining from use of tobacco in any form, given the associated higher risk of cirrhosis (strong recommendation, very low level of evidence).

In a large study of 128,934 individuals receiving health examination between 1978 and 1985, smoking \geq 20 cigarettes daily was

independently associated with a 3-fold risk of ALD cirrhosis (42). In a more recent study, smoking >10 g of tobacco per day (>16 cigarettes) was associated with 1.6-fold risk of developing ALD cirrhosis, with the effect more significant in women than men (95% CI 1.6–9.4 vs 0.9–3) (43). Furthermore, the Million Women Study of >1.2 million women in the United Kingdom showed that the risk of cirrhosis was higher with current smoking and drinking >7 drinks a week (RR 8.02, CI 6.84–9.4) than being a never smoker with the same level of drinking (RR 2.09, CI 1.72–2.53) (44). In addition, multiple epidemiologic studies have found concurrent tobacco and heavy alcohol use to increase the risk of HCC (45–47). Although, based on animal studies, multiple toxins (nitrosamines, aromatic hydrocarbons, and other alkaloids) in cigarette smoke have been shown to cause systemic inflammation, oxidative stress, tissue hypoxia, and generation of free radicals, all of which may promote hepatic fibrosis, further animal studies have found that nicotine independently promotes liver fibrosis (48,49).

Recommendations

- In persons with obesity, we recommend avoiding consumption of alcohol (strong recommendation, moderate level of evidence).
- To assist with weight optimization and glucose control in persons with obesity or type 2 diabetes, we suggest abstinence from alcohol use (conditional recommendation, very low level of evidence).
- In patients undergoing or with a history of gastric bypass surgery, we recommend avoidance of heavy alcohol use (strong recommendation, very low level of evidence).

Obesity and metabolic syndrome increase the risk of advanced liver disease in heavy drinkers (50). Epidemiologic studies show that a body mass index of >30 kg/m² in patients with >3 drinks per day increases the risk of liver disease including elevated transaminases, steatosis, severity of fibrosis, cirrhosis, and HCC (51). Moreover, the presence of obesity among heavy drinkers is associated with increased likelihood of having cirrhosis (50,51). In another study, individuals with harmful alcohol consumption who are obese or overweight compared with normal weight were at 1.5-fold risk for any liver disease and 2.2-fold risk for death (52). Although large epidemiological studies initially suggested that moderate alcohol consumption may protect against MASLD (53,54), more recent studies using individual data indicate that even moderate

drinking can favor the development of liver disease in people with obesity and metabolic syndrome (55,56).

Diabetes also seems to exacerbate the development of liver disease in people who drink. A recent study revealed that having diabetes in the setting of heavy alcohol use was associated with a 6-fold higher risk of a liver-related admission, mortality, and HCC (57). Interestingly, although bariatric surgery can alleviate or reverse MASLD, it can be a risk factor for the development of AUD and consequent ALD (58,59). Gastric bypass anatomy is associated with a 2- to 3-fold increased risk for the diagnosis of AH (60). Furthermore, a recent study of the national inpatient sample showed that among admissions for alcohol-associated cirrhosis (N = 10,168), a concurrent diagnosis of AH was higher in those with vs without a history of Roux-en-Y gastric bypass (18.8% vs 17% $P = 0.032$) (61).

Recommendation

5. In patients with chronic HCV infection, we recommend avoiding consumption of alcohol (strong recommendation, high level of evidence).

Alcohol use is a frequent cofactor in individuals with HCV infection, and heavy daily alcohol use (>50 g) was shown to be an independent risk factor for hepatic fibrosis progression in HCV patients with viremia (62). The dose-dependent deleterious effects of alcohol in HCV have been recently revealed in a meta-analysis of 33 studies from 21,919 participants, demonstrating that each daily drink increased the risk for cirrhosis, decompensated cirrhosis, and liver-related mortality by 11.2% (63). Moreover, individuals with chronic HCV who drank > 6 standard drinks daily had a >50-fold increased risk of developing HCC than those who did not drink (64).

Recommendation

6. In patients with chronic HBV infection, we recommend avoiding consumption of alcohol (strong recommendation, low level of evidence).

Several studies have shown that alcohol drinking worsens the course of HBV liver disease. In a cohort study of adults hospitalized with chronic liver disease and concurrent alcohol use of > 3 drinks per day, HBsAg-positive patients had 2-fold increased odds of cirrhosis compared with patients without HBV (odds ratio [OR] 4.8, CI 1.8–12.4 vs OR 2.4, CI 1.3–4.2) (65). In a prospective cohort study of 966 patients with cirrhosis (2000–2009) and followed until 2011, the annual incidence of HCC was 9.9% in 132 patients with HBV infection and AUD, 4.1% in patients with HBV infection who did not use alcohol, and 2.1% in patients with AUD without HBV infection. The 10-year cumulative incidence of HCC was 52.8% vs 39.8% vs 25.6% ($P < 0.001$) for the 3 respective groups (66). For patients with cirrhosis and HBV infection with AUD, higher HBV DNA levels were associated with risk of HCC, while treatment with oral antiviral drugs for HBV infection protected against HCC development (66). Furthermore, in another prospective cohort study of 1,515 patients with cirrhosis, those with HBV and heavy chronic alcohol use (>80 g of alcohol daily for > 5 years) had a higher incidence of HCC occurring over a 10-year follow-up compared with patients with HBV cirrhosis without heavy alcohol use (crude HR 2.13, 95% CI 1.62–2.81, $P < 0.001$) (67).

DIAGNOSIS AND TREATMENT OF AUD

Recommendation

7. In adults being screened for alcohol use, we recommend the use of brief screening tools, such as the Alcohol Use Disorders Identification Test-Consumption tool (strong recommendation, high quality of evidence).

Key concept/statement

10. Standardized screening practices for AUD should be implemented at every medical encounter, across diverse clinical settings, including the primary care setting, with attention to conducting screening in a nonbiased manner.

Due to various susceptibility factors, individuals with long-term harmful alcohol use are at risk for AH, cirrhosis, and HCC (68). Patients with ALD often present at an advanced stage of liver disease and progress faster to advanced disease and/or complications compared with other liver diseases including MASLD and HCV (69,70). Many patients with ALD present for medical care after they have developed complications of cirrhosis (71), with previous healthcare encounters representing missed opportunities for identifying individuals with harmful alcohol use and achieving the downstream benefits of preventing ALD and its complications (72–74). The ideal screening tool and setting for identifying individuals with AUD should be tailored to individual populations given global healthcare and technology disparities (75). The AUD Identification Test (AUDIT), a 10-item patient self-reported questionnaire, is an accurate and validated tool for screening individuals for AUD and grading its severity. A shorter version, Alcohol Use Disorders Identification Test-Consumption, composed of 3 questions, is quick to use in clinical practice, with similar accuracy to the full AUDIT tool (76). The AUDIT score demonstrated a linear relationship with mortality in a meta-analysis of 7 studies on 309,991 persons. In this study where 18,920 deaths were observed over 2–10 years of follow-up (72), those with AUD had a 24% higher relative risk of dying compared with moderate drinkers (72). A limitation of this meta-analysis was that 97% of study population represented veterans, with a sparse representation of young adults and women. The cutting down annoyance by criticism guilt eye opener questionnaire, another tool to gauge alcohol use, assesses the dependence on alcohol and does not quantify alcohol use. A single question “how many times in the past year have you had 5 or more drinks (4 or more for women) at one time” can also be used to identify those with harmful alcohol use.

Universal screening for AUD at any healthcare encounter

Screening all patients for AUD is feasible in the healthcare setting (77–80). For example, admitting nurses in a large hospital emergency department performed alcohol use screening in 637 patients using AUDIT and modified-for-Australia version of the Paddington Alcohol test. The Australia version of the Paddington Alcohol test performed moderately well compared with AUDIT (kappa statistics of 0.63, $P < 0.001$), with a sensitivity and specificity of 72.5 (65.3%–79.7%) and 90.8 (88.3%–93.4%), respectively (81). A targeted approach to screening in the healthcare setting by selecting individuals with complaints anecdotally associated with harmful drinking has also been explored. A multicenter study of 3,021 patients from 29 primary care offices found

that alcohol screening in a population of individuals with mental health conditions, gastrointestinal conditions, hypertension, and minor injuries had a higher odds ratio for harmful alcohol consumption than in a universally screened population without these complaints (1.65, 95% CI 1.41–1.93) (82).

Key concept/statement

11. Alcohol biomarkers may be a useful adjunct to clinical inquiry and alcohol use surveys. The choice of test should be tailored to the suspected window of alcohol use.

Indirect biomarkers of alcohol reflecting alcohol-induced tissue damage (i.e., gamma-glutamyltransferase, mean corpuscular volume, and carbohydrate-deficient transferrin) (83) have high individual variability and limited utility (34). Direct alcohol biomarkers including blood alcohol concentration (84), ethyl glucuronide, ethyl sulfate (85–91), and phosphatidylethanol (92) seem to have better performance than indirect biomarkers. For the detection of recent alcohol use in individuals with liver disease (93), alcohol biomarkers have variable temporal windows of detection, sensitivity, and specificity as detailed in Table 4. For patients who disclose heavy recent drinking, alcohol biomarkers provide no added clinical utility. Biomarkers may be helpful to identify recent alcohol use in patients who cannot be interviewed because of encephalopathy or intoxication or when reported alcohol use is suspected to be inaccurate.

Recommendation

8. In patients with ALD and AUD, we recommend incorporating brief motivational interventions into clinical care (strong recommendation, low quality of evidence).

Nonpharmacologic therapies for AUD include motivational interviewing, screening, brief intervention (BI), referral, and treatment, BI, cognitive behavioral therapy, motivational enhancement therapy, and 12-step facilitation/Alcoholics Anonymous. The former 3 approaches can be performed by any healthcare provider using a foundation of motivational interviewing techniques, while the latter 3 require specialty expertise. Motivational interviewing is a non-judgmental, nonconfrontational conversational technique aimed to increase a person's awareness of the problems caused, consequences experienced, and risks faced because of an undesirable behavior (https://store.samhsa.gov/sites/default/files/SAMHSA_Digital_Download/PEP20-02-02-014.pdf). It is important that the interviewer exhibits an empathic attitude and a collaborative approach, regarding the individual's autonomy (94,95). Screening, BI, referral, and treatment is a comprehensive approach with proven efficacy in reducing short-term and long-term (96,97) alcohol use in persons with AUD. BI based on the 5 "A" model (ask about use, advice to quit or reduce, assess willingness, assist to quit or reduce, and arrange follow-up), where physician feedback on alcohol-related harms was shown to reduce alcohol use in a study of more than 9,000 individuals with mild AUD (AUDIT score 8–20) in a primary care setting (77). Seven patients needed to be treated to achieve reduction of alcohol use to within recommended limits in one patient (77). A 2018 meta-analysis of 69 studies including more than 33,000 participants showed a reduction in alcohol consumption by 20 g/wk after a BI in the primary care setting (98). A 2018 Cochrane review showed that 12-step facilitation/Alcoholics Anonymous had the most promise for

decreasing drinking behavior when compared with cognitive behavioral therapy or no treatment; however, liver-related endpoints were not reported (99).

Recommendations

9. In patients with compensated ALD, we recommend use of baclofen as an option for treatment of AUD (strong recommendation, moderate level of evidence).
10. In patients with compensated ALD, we suggest use of acamprosate or naltrexone as an option for treatment of AUD (conditional recommendation, very low level of evidence).
11. In patients with compensated ALD, we suggest use of gabapentin or topiramate as an option for treatment of AUD (conditional recommendation, very low level of evidence).
12. Disulfiram should not be used in the treatment of AUD along any spectrum of ALD (conditional recommendation, very low level of evidence).

Pharmacotherapy of AUD is effective (1,100) and is associated with reduced risk of ALD and disease progression in those with cirrhosis (101,102). In the setting of ALD cirrhosis, the use of medication-assisted therapies is cost-effective because of benefits in reducing clinical decompensation and readmission to the hospital (103). There are 3 US Food and Drug Administration (FDA)-approved medications (disulfiram, acamprosate, and naltrexone) for AUD and others that have shown utility in patients that are not US FDA-approved. In patients with advanced liver disease including cirrhosis and AH, baclofen (GABA-B receptor agonist), a non-US FDA-approved drug, has been studied the most. Baclofen use for an average duration of 5.8 months has been shown to safely reduce alcohol use in patients with AH (104) and increase abstinence rates in those with ALD cirrhosis (105,106). The medication is started in a dose of 5 mg 3 times a day, with dose escalation at 3–5-day intervals based on patient tolerance to a maximum dose of 15 mg 3 times a day.

Acamprosate does not undergo hepatic metabolism, and a recent retrospective analysis suggests that its use in cirrhotic patients is safe (107); however, a retrospective cohort study revealed that acamprosate use for the treatment of AUD in individuals without a diagnosis of ALD at the start of treatment was associated with the development of ALD (OR 2.59, 95% CI 1.84–3.61, $P < 0.001$). However, this could have been a selection bias with preferential treatment of those at risk for development of ALD, or it is possible that the diagnosis of ALD was missed before recruiting patients into the trial. Nevertheless, acamprosate use for AUD trended to a higher odds ratio for the development of hepatic decompensation in individuals with well-compensated cirrhosis at the start of treatment (OR 1.99, 95% CI 0.99–4.059, $P = 0.06$) (102). If acamprosate is used, caution should be taken in patients with concurrent kidney disease, with dose adjustment if the creatinine clearance is between 30 and 50 and avoidance if below 30 mL/min. Both short-term and long-term acting forms of naltrexone may be used in individuals with early ALD and in those with compensated cirrhosis but should be avoided in patients with decompensated cirrhosis or liver failure and used cautiously in patients with kidney disease (108). There are no data for acamprosate or naltrexone on the duration of treatment and use in patients with AH.

Other pharmacological agents with off-label use for AUD include gabapentin and topiramate (109). Gabapentin and

Table 4. Biomarkers of alcohol use

	Specimen	Window	Sensitivity %	Specificity%	PPV %	NPV %	References	
	CDT	Blood	2–4 wk	25–100	57–100	64–100	71–93	(86,281–286)
	EtG	Urine	3–7 d	70–76	93–99	81–97	85–99	(86,284,286,287)
	EtG	Hair	3–6 mo	58–100	66–100	68–100	86–100	(85,286,288)
	EtS	Urine	3–7 d	73–82	86–89	70–80	85–93	(287)
	PEth	Blood	30 d	73–100	66–96	85	100	(286,289)

Overall table heavily informed by a systematic review (93).
 CDT, carbohydrate-deficient transferrin; EtG, ethyl glucuronide; EtS, ethyl sulfate; NPV, negative predictive value; PEth, phosphatidylethanol; PPV, positive predictive value.

topiramate have demonstrated acceptable safety profiles in individuals with ALD (102), although large, prospective trials are needed. Data are emerging on the potential role for glucagon like peptide-1 receptor agonists in the treatment of AUD (110).

Despite having US FDA approval for AUD, disulfiram is contraindicated in individuals with liver disease of any spectrum because it is completely metabolized by the liver and hepatotoxic. Idiosyncratic liver injury of an immunoallergic mechanism has been well-described with disulfiram use and, although rare, seems more common in individuals with pre-existing liver disease (111). Furthermore, disulfiram does not seem effective in preventing development or progression of liver disease in individuals with AUD. In a retrospective cohort study of patients lacking ALD, those treated with any pharmacologic agent for AUD had a lower odds ratio for the development of ALD (OR 0.37, CI 0.31–0.43, $P < 0.001$); however, when disulfiram was examined in disaggregate, it showed no effect (OR 0.86, CI 0.43–1.61, $P = 0.66$). In individuals with cirrhosis, treatment with any pharmacologic agent for AUD was protective against hepatic decompensation (OR 0.35, CI 0.23–0.53, $P < 0.001$); however, when analyzed in disaggregate, disulfiram again showed no effect (OR 2.59, CI 0.54–13.26, $P = 0.24$) (102).

Key concept/statement

12. Alcohol withdrawal syndrome (AWS) in persons with AUD and ALD should be assessed and managed as per the Clinical Institute Withdrawal Assessment-Alcohol-revised protocol. Clinicians should be aware to differentiate AWS from hepatic encephalopathy and acknowledge that the 2 conditions can coexist.

Recommendation

13. In patients with ALD and severe AWS, we recommend cautious use of benzodiazepines as treatment of choice, and careful monitoring given their potential to precipitate or exacerbate hepatic encephalopathy (strong recommendation, moderate level of evidence).

AWS is a common condition affecting alcohol-dependent patients who abruptly discontinue or markedly decrease alcohol consumption. A recent study showed that AWS is frequent in patients with AH and negatively affects survival (112). Mild or moderate AWS usually develops within 6–24 hours after the last drink, and symptoms may include nausea/vomiting, hypertension, tachycardia, tremors, hyperreflexia, irritability, anxiety, and

headache. These symptoms may progress to more severe forms of AWS, characterized by delirium tremens, generalized seizures, coma, and even cardiac arrest and death. Older individuals are at greater risk for delirium tremens. Those with moderate or severe AWS are typically monitored in an intensive care unit, where vital signs, volume status, and neurological function can be monitored closely. Severity scores for AWS such as the Clinical Institute Withdrawal Assessment are useful in guiding management, although they have not been validated in persons with severe ALD and a symptom-triggered approach is preferred (113–117). Benzodiazepines are the most used drugs to treat AWS. Long-acting benzodiazepines (e.g., diazepam and chlorthalidoxepoxide) protect against seizures and delirium; short-acting and intermediate-acting benzodiazepines (e.g., lorazepam and oxazepam) are safer for patients with poor liver function (118,119). Oral administration is preferred for administration of benzodiazepines and barbiturates (112). Patients with AWS and concomitant hepatic encephalopathy should be treated for both conditions. Of note, benzodiazepines may precipitate and worsen hepatic encephalopathy; thus, careful monitoring and the dose titration are critical for optimal outcomes. Given the side effects of benzodiazepines in patients with advanced liver disease and the potential for abuse with repeated use, other drugs such as baclofen, clonidine, gabapentin, and topiramate have been proposed to treat AWS in persons with ALD including alcohol-associated cirrhosis. However, the efficacy and safety of these medications in individuals with AH is unknown, and therefore, prospective studies are required.

ALD DISEASE SPECTRUM

Key concepts/statements

13. Noninvasive blood and/or radiological tests (NITs) should be used to assess the severity of fibrosis in persons with asymptomatic ALD. FIB-4 score, a blood-based marker, and hepatic transient elastography are best initial NITs of fibrosis among persons with ALD.
14. Persons with heavy drinking who have evidence of ALD detected with NIT should be counseled on the risk of progressive liver disease and referred to a provider with expertise in liver disease.
15. Liver biopsy is not required for staging of fibrosis but may be needed if there is diagnostic uncertainty based on noninvasive assessment.

Fibrosis assessment among asymptomatic individuals with suspected ALD (Figure 2) is important because fibrosis correlates with long-term outcomes including survival (120–122). Liver biopsy is an

invasive and costly procedure that is indicated when there are diagnostic uncertainties or suspected competing diagnoses. Several NITs have been assessed in this population (1,123). Among blood-based nonpatented markers, Fibrosis-4 (FIB-4) has been most studied and shown to have high sensitivity (80%–90%), but low specificity (60%–70%) in excluding advanced fibrosis (F3-4). The enhanced liver fibrosis score and FibroTest are patented blood-based biomarkers with higher specificity (80%–90%), but with higher cost and limited availability, especially in resource-constrained settings (120). It should be acknowledged that enhanced liver fibrosis is not as well validated in patients with ALD as other etiologies such as HCV and MASLD (124). Furthermore, platelets can be reduced by active alcohol use, which can affect the accuracy of FIB-4 as a noninvasive serological marker for fibrosis assessment in patients with ALD (1). Among radiological tests, vibration-controlled transient elastography, a test of liver stiffness measurement (LSM), has been most extensively evaluated for fibrosis assessment in patients with ALD. Multiple meta-analyses have found acceptable sensitivity and specificity, especially for advanced fibrosis (F3-F4) (122,125,126). For example, in a meta-analysis of 1,026 patients with ALD using individual patient data, a cutoff LSM of 12.1 kPa was fairly accurate to identify advanced fibrosis with receiver operating characteristics of 0.90 (95% CI 0.86–0.94) (122). It should be noted that underlying inflammation and steatohepatitis as reflected by aspartate aminotransferase levels >200 I/L and/or elevated serum bilirubin may confound and overestimate the LSM in patients with ALD (122). As the fibrosis stage is the strongest predictor of prognosis in liver disease (127), individuals with advanced fibrosis and active drinking should be referred to a liver specialist and an alcohol addiction specialist (121).

Key concepts/statements

16. Screening individuals with heavy drinking using NITs for the detection of early ALD is cost-effective.

ALD is often undetected until irreversible, late-stage decompensated disease manifests. Consequently, there is an unmet need for effective and economically reasonable pathways to screen for advanced fibrosis among persons who drink alcohol. Studies have demonstrated that the use of NITs is cost-efficient in detecting advanced fibrosis in people with excessive alcohol intake (128,129). Furthermore, in a study compiling prospective data from 6 independent cohorts of 6,295 individuals, vibration-controlled transient elastography screening of the general population was less cost-effective than screening of individuals with heavy alcohol use with the number needed to detect 1 case of significant fibrosis (F2 or higher) being 12.5 (130). It is possible that thresholds to identify those who warrant screening are lower in patients with repeated episodes of binge drinking and those with comorbidities (131), although more data are needed. Although there are no data on the frequency of repeating screening tests, it may be reasonable to screen annually among those identified as having low risk for advanced fibrosis but who continue to use alcohol.

MANAGEMENT OF ALD

Recommendation

14. In persons with ALD, we recommend offering integrated multidisciplinary care models that incorporate behavioral and/or pharmacotherapy for treatment of AUD (strong recommendation, low level of evidence).

Patients with ALD are suffering from 2 disorders, one of liver disease and the other of AUD. To date, the most effective therapy to attenuate the clinical course of ALD and even reverse liver damage is prolonged alcohol abstinence (132,133). Increasing evidence is demonstrating that integrated care with a hepatologist and an addiction specialist is more effective than the absence of one (132,133) (Figure 2). AUD treatment in patients with ALD cirrhosis and AH associates with improvement in patient survival, decompensating events, and complications of cirrhosis, as well as reduced 30-day readmissions (101,134–136). However, it should be noted that receiving treatment for AUD, even in advanced ALD, is the exception rather than the rule. In a retrospective cohort study of more than 35,000 veterans with cirrhosis and AUD, receipt of AUD treatment in a cohort of these patients was associated with reduction in decompensation and improved patient survival within 6 months of treatment (101). Only 14% of veterans with ALD, however, received any AUD treatment, with <1% receiving pharmacotherapy. In a systematic review of 13 studies (5 of which were randomized controlled) on 1,945 patients (137), abstinence rates, however, were higher in a randomized controlled study with an integrated multidisciplinary care model with hepatologists and addiction specialists in a colocated clinic compared with usual care of AUD (74% vs 49%, $P = 0.02$) (138). In another meta-analysis of 6 studies on 649 LT recipients for ALD, an integrated care model compared with standard follow-up by only hepatology in a transplant clinic was associated with a lower rate of relapse to alcohol and long-term patient mortality with odds ratios of 0.56 (95% CI 0.36–0.87) and 0.29 (95% CI 0.08–0.99), respectively (139).

Key concepts/statements

17. Patients with cirrhosis due to ALD should be managed similarly to those with cirrhosis because of other causes.

18. Patients with complications of ALD cirrhosis should be referred for LT when it is medically indicated.

HCC screening

Patients with advanced fibrosis or cirrhosis are at an increased risk of developing HCC, with an annual incidence of 2.5%–2.9% reported in 2 separate studies (140,141). In a meta-analysis of 18 studies on 148,333 patients with ALD cirrhosis, the incidence of HCC was 1%, 3%, and 9% at 1-, 3-, and 5-year follow-up, respectively. This risk was higher in patients enrolled in a surveillance program vs those not undergoing regular HCC surveillance (142). Ultrasound examination with or without α -fetoprotein estimation every 6 months is used to screen patients with ALD cirrhosis for HCC similar to any other patient with cirrhosis (143).

Hepatic encephalopathy

In patients with altered mental status, causes other than hepatic encephalopathy should be screened for when suspected, especially among individuals with clinical neuropsychiatric features which are atypical for a diagnosis of hepatic encephalopathy. For example, seizures, focal neurological deficits, severe headache, and encephalopathy refractory to all measures should point toward an alternate cause such as stroke, subdural hematoma, drug overdose, meningitis, and fungal infections of the central nervous system. A drug screen is recommended in selected individuals. Imaging of the head and cerebral spinal fluid studies may be

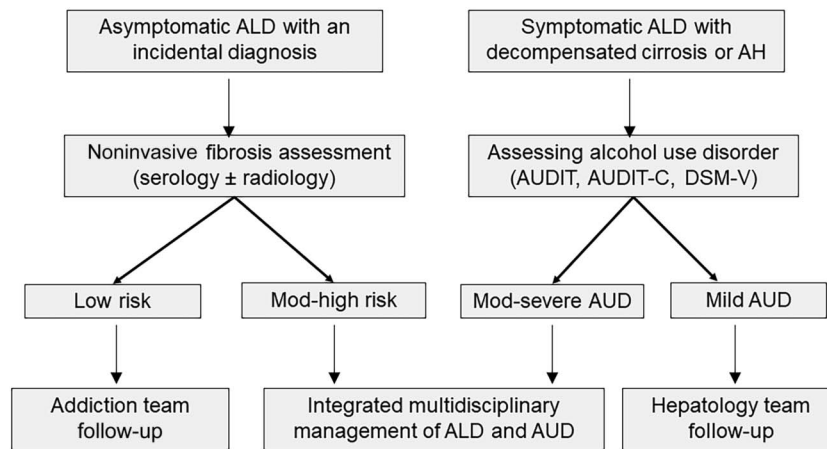


Figure 2. Integrated multidisciplinary care model for management of the dual pathology of alcohol use disorder and of alcohol-associated liver disease at any spectrum of liver disease. AH, alcohol-associated hepatitis; ALD, alcohol-associated liver disease; AUD, alcohol use disorder; AUDIT, AUD Identification Test; AUDIT-C, Alcohol Use Disorders Identification Test-Consumption; DSM-V, diagnostic and statistical manual.

required (144). It is also important to rule out Wernicke encephalopathy as a cause for altered mental status because it has its own prognostic and management implications (145,146), especially when considering LT for patients with ALD.

Nutrition

Every patient with ALD requires assessment of nutritional status because malnutrition is frequently present in these patients (147). Detailed clinical evaluation using the subjective global assessment tool is commonly used to assess the nutritional status (147). Nutritional goals for patients with cirrhosis from ALD are similar to those for all patients with cirrhosis with repletion of vitamin and mineral deficiencies (thiamine, vitamin B12, and zinc) common in AUD if alcohol use is recent or ongoing (148). This is covered in detail in a subsequent section under the management of AH.

Vaccinations

Individuals with chronic liver disease should have vaccination against hepatitis A virus, HBV, influenza, pneumococcus, herpes zoster, tetanus, diphtheria, pertussis, and SARS-CoV-2 (149).

LT

Individuals with decompensated alcohol-associated cirrhosis or severe AH should be considered for referral for LT (1,150).

AH

Key concepts/statements

19. The NIAAA diagnostic criteria are a useful guide for making a probable diagnosis of AH, and those meeting criteria can be treated with corticosteroids, if eligible, or recruited into clinical trials. A liver biopsy is not required to make a diagnosis of AH in the absence of confounding factors.
20. Individuals with severe AH, defined by MELD >20 , have a high short-term mortality and should preferably be hospitalized for management.
21. Individuals with moderate AH, defined by MELD ≤ 20 , have significant morbidity and mortality. Further work is needed to study this phenotype and develop effective therapies.
22. Sustained abstinence is associated with long-term survival after severe and moderate AH.

Among patients with suspected heavy alcohol use and new onset or worsening jaundice, clinicians should have a high suspicion for AH given its high short-term mortality. The NIAAA has proposed clinical criteria (Table 5) for the diagnosis of probable AH, which can spare severely ill patients the risk of liver biopsy. However, when the diagnosis is uncertain and 1 or more of the criteria are not met, a liver biopsy should be considered (Figure 3).

Clinical features of AH include nonspecific constitutional symptoms and symptoms attributable to advanced ALD. Although evidence of hepatic decompensation is not required to make the diagnosis of AH, physical examination signs may overlap with ALD cirrhosis reflecting the presence of portal hypertension and its complications. Furthermore, the inflammation and steatosis of AH may promote *de novo* onset of portal hypertension in patients with minimal pre-existing liver disease and those with previously compensated cirrhosis. Signs of AWS may be present if cessation of drinking is recent (151). A careful search should be made for a source of potential infection or sepsis, including skin examination for signs of cellulitis and infection around venous lines. The systemic inflammatory response syndrome (SIRS 1st) (presence of 2 or more of temperature >38 or <36 degree Celsius, heart rate >90 bpm, respiratory rate >20 or PCO₂ <32 mm Hg, and white cell count $>12 \times 10^9/L$) may be present even in the absence of infection (152) and is associated with a nearly 3-fold risk of mortality (153). In addition, the presence of SIRS predicted the development of renal failure and 90-day mortality in 2 cohort studies (152,154).

Once a diagnosis of AH is made, disease severity is stratified. Although several scoring systems are available (155), the model for end stage disease (MELD) score is most frequently used to estimate disease severity and determine eligibility for corticosteroid treatment, with scores >20 indicating severe AH and ≤ 20 indicating moderate AH (156). These studies and recommendations are based on the original MELD and not MELD-sodium (MELD-Na) calculation (157). In one study, the MELD-Na score is as accurate in the assessment of disease severity and identifying patients eligible for corticosteroid treatment (158). It will be interesting to examine performance of MELD 3.0 in the

Table 5. NIAAA and grading criteria of AH

Definition	Criteria
Definite AH	Histological confirmation of features of alcohol-associated hepatitis
Probable AH	Onset of jaundice within 60 d of heavy alcohol use (more than 50 g/d) for a minimum of 6 mo, serum bilirubin >3 mg/dL, elevated AST ranging from 50 to 400 U/L, an AST:ALT ratio >1.5, and no other cause of acute hepatitis
Possible AH	Clinical diagnosis uncertain due to another confounding etiology of liver disease or unclear history on alcohol consumption

AH, alcohol-associated hepatitis; ALT, alanine aminotransferase; AST, aspartate aminotransferase; NIAAA, National Institute of Alcoholism and Alcohol Abuse.

assessment of patients with AH. Although the 90-day survival of patients presenting with severe AH has improved over time, current cohorts report a survival ranging from 35% (159) to 70% (160), with variability related to severity of AH and response to corticosteroids. The natural history beyond 90 days was highlighted in a single-center US study of 95 patients with severe AH with a median follow-up period of 795 days who were evaluated for, but ultimately did not undergo, LT. Spontaneous recovery (defined as having a MELD score of <21 at 90 days after the index hospitalization) occurred in 35% of individuals, but about half continued to have ascites and hepatic encephalopathy at the last follow-up. Only 7% of the cohort recovered to a compensated state (MELD <15 without ascites or hepatic

encephalopathy) by the end of follow-up (161). For patients presenting with severe AH, hospitalization to determine clinical trajectory is preferable.

For patients with moderate AH, less is known about the natural history; however, the 1-year mortality ranges from 10% to 20% (162–164). In a study of all patients with AH, survival at 12 months among patients with moderate AH was 3-fold higher compared with those with severe AH (163). In another study of 142 patients with biopsy-proven AH followed for 55 months, lack of relapse to alcohol was associated with improved long-term survival (HR 0.53; *P* = 0.03) independent of MELD score (*P* < 0.05). Individuals who relapsed were of younger age (<48 years) and/or had a history of prior alcohol rehabilitation attempt (165).

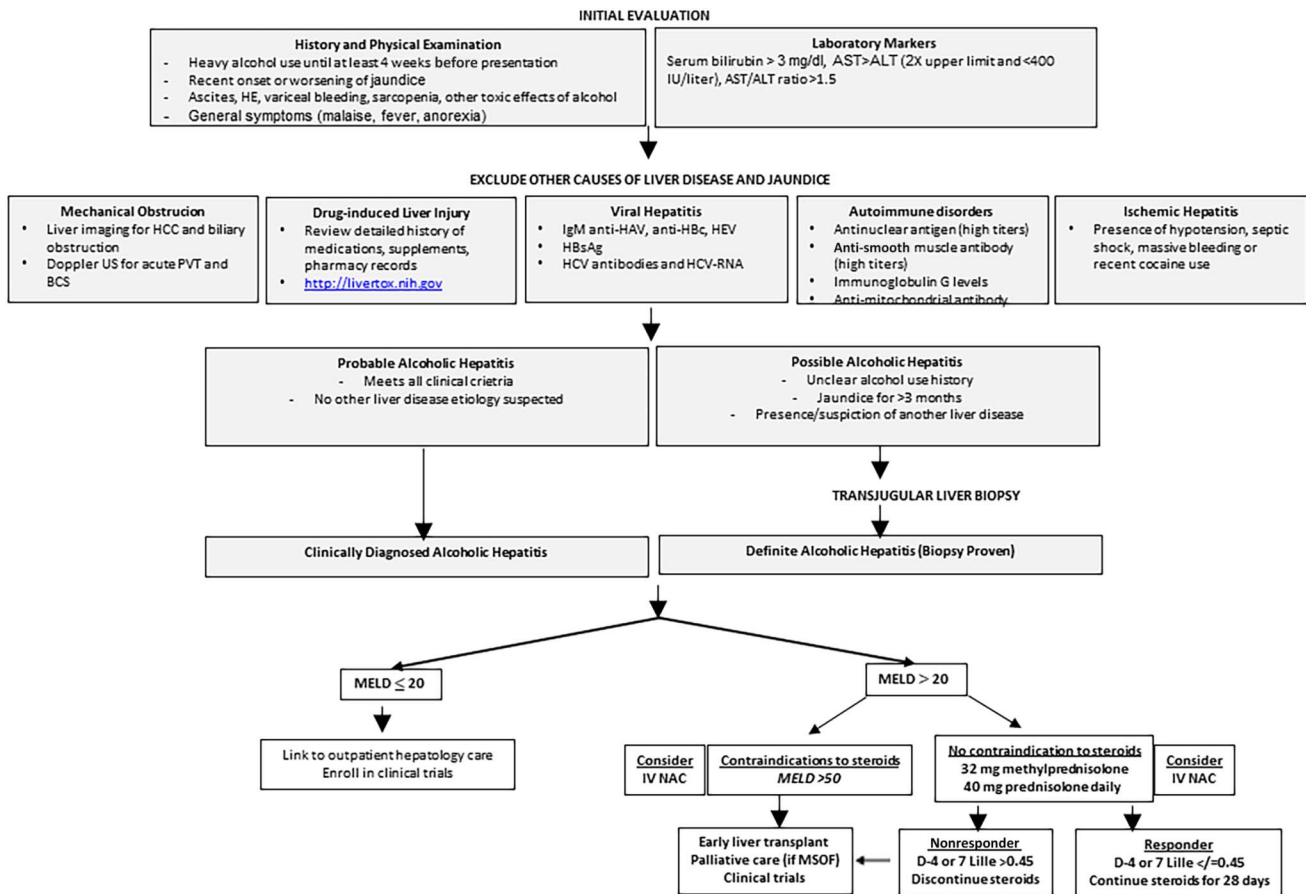


Figure 3. Algorithmic approach toward diagnosis and management of alcohol-associated hepatitis. ALT, alanine aminotransferase; AST, aspartate aminotransferase; BCS, budd chiari syndrome; HE, hepatic encephalopathy; HEV, hepatitis E virus; HCC, hepatocellular carcinoma; PVT, portal vein thrombosis.

Downloaded from https://journals.lww.com/ajg by BMDMIEPHKAVI7E0um11QIN4a+kJLHEZpsH04XN10hCwvCX1AWN YQp/1QrHD3i3D00RfY7V5F14C3VCA/OA/vpDDa8KKGKv07my+78= on 01/12/2024

Key concepts/statements

23. For patients with AH, the MELD score >20 can be used to stratify disease severity, predict the risk of short-term mortality, and guide the use of corticosteroid therapy.

The Maddrey discriminant function index (mDF) is the historical index used to assess disease severity, corticosteroid eligibility, and short-term mortality risk in AH (166). Retrospective and prospective analysis of this score indicates that $mDF \geq 32$ predicts a mortality rate of approximately 20%–50% over 30 days (167). Advantages of using the MELD score in the assessment of AH severity are its better accuracy, worldwide use in organ allocation, use of International Normalized Ratio over prothrombin time, and incorporation of serum creatinine, a major determinant of outcomes in patients with AH (156,168). A MELD score >20 has been proposed as defining severe AH with an approximately 20% 90-day mortality (156). Beyond MELD, other scoring systems that have been assessed for AH include Child-Turcotte-Pugh, Glasgow Alcoholic Hepatitis Score (GAHS), and Age Bilirubin International Normalized Ratio and Creatinine (ABIC). In a *post hoc* analysis of 1,068 patients with AH in the steroids or pentoxifylline (PTX) for alcoholic hepatitis (STOPAH) study, mDF was inferior (receiver operating characteristic [ROC] 0.67) to MELD, GAHS, and ABIC scores (ROC 0.704–0.726) in determining short-term mortality at 28 and 90 days (169). In a prospective study on 71 biopsy-proven cases of AH, available scores (including MELD, GAHD, ABIC, mDF, and MELD-Na) were similar in accuracy, with 86%–100% ability to rule out severe disease, but had low positive predictive values ranging from 17% to 50% (158). Additional smaller studies have suggested that the performance of many scoring systems is similar in predicting 30-day mortality (170,171). Further analysis comparing several scores showed the MELD score to be the best score in assessing short-term mortality risk with $ROC > 0.77$ (157). Although MELD-Na and MELD are similar in predicting short-term mortality in AH (172), MELD 3.0 has been recently shown to have equivalent performance to MELD and may have utility to predict need for renal replacement therapy though further validation is needed (173).

There is a minimal role for liver biopsy for prognostication of AH. Although the Alcoholic Hepatitis Histologic Score, determined by presence and degree of bilirubinostasis, absence of megamitochondria, and degree of polymorphonuclear infiltration on biopsy (Figure 4), did reveal higher scores associated with higher 90-day mortality (174), the Alcoholic Hepatitis Histologic Score performed no better than GAHS and MELD scores in predicting 28-day mortality in the STOPAH cohort (175). Previous studies showed that the combination use of MELD at baseline and the Lille score at day 7 have best discrimination and calibration for 2-month and 6-month mortality (176).

Patients with AH may present with ACLF as defined by various diagnostic criteria for ACLF, however, given the multitude of proposed scoring systems (177–180), lack of uniform definition across continents, and few studies limited to patients with AH, further work is needed to determine the optimal score for predicting mortality in AH patients with ACLF.

Recommendation

15. In hospitalized patients with severe AH, we recommend against universal administration of prophylactic antibiotics (strong recommendations, moderate level of evidence).

Infections are a common occurrence at presentation and during hospitalization in patients with AH. For example, in a prospective study of 1,092 patients with AH, 135 (12.4%) had an infection at baseline; of the remaining 957 patients, 251 (26.2%) developed infections during corticosteroid or pentoxifylline (PTX) treatment and 89 (9.3%) developed an infection after the treatment (181). In this study, prednisolone was associated with higher likelihood of infections after treatment but not during treatment and development of infection in those on steroids was associated with 2.46-fold higher 90-day mortality (181). However, in a meta-analysis of 12 other studies of 1,068 individuals with AH, the overall infection rate was 20% with no differences seen in those who received corticosteroids or not, although a higher risk specifically for fungal infections was found in steroid-treated patients (182). Another multicenter retrospective cohort study of patients with AH found that 49% had evidence of infection and the diagnosis of infection was an independent risk factor for 90-day mortality (HR 2.33, 95% CI 1.63–3.35, $P < 0.001$). In this study, however, initiation of empiric antibiotics on admission in the absence of infection did not reduce mortality or alter the incidence of subsequent infections. Corticosteroid use increased the incidence of infection, but this did not affect survival (183).

Studies on the use of prophylactic antibiotics in patients with AH have not shown promise for mortality benefit. In a placebo-controlled trial, rifaximin use for 90 days in patients with AH safely reduced infections (0.29 vs 0.62 infections/patient) and liver-related complications (0.43 vs 1.26 complications/patient) and showed a trend for lower 90-day mortality compared with the control arm (184,185). However, a 7-day course of oral vancomycin, gentamycin, and meropenem in 14 patients with AH showed no 90-day survival benefit compared with a reference group of patients with AH receiving standard of care (186). In the Antibiotic trial, 284 individuals with biopsy-proven AH were randomly assigned to receive prednisolone plus amoxicillin/clavulanate or prednisolone plus placebo for 30 days. Those in the antibiotic group had a lower cumulative incidence of infection (42 vs 59 events; HR 0.616, $P = 0.015$), but there was no difference in 60-day mortality (24 vs 31 in deaths; HR 0.769; 95% CI 0.451–1.31).

Recommendation

16. In patients with AH who are malnourished or unable to meet their caloric requirements through oral nutrition alone, we recommend the addition of oral nutritional supplements. In patients who remain unable to meet their caloric requirements despite oral nutritional supplements, we recommend enteral nutrition support (strong recommendation, moderate level of evidence).

Key concepts/statements

24. A caloric intake goal of 35 kcal/kg/d with 1.2–1.5 g/kg/d of protein is recommended for patients with AH. Those patients consuming <21 kcal/kg/d should receive nutritional support preferably through oral/enteral routes.

25. Thiamine, vitamin B12, and zinc deficiencies are common in individuals with AH and should be supplemented.

Severe malnutrition is common in individuals with severe AH and portends a worse short-term survival (187–191).

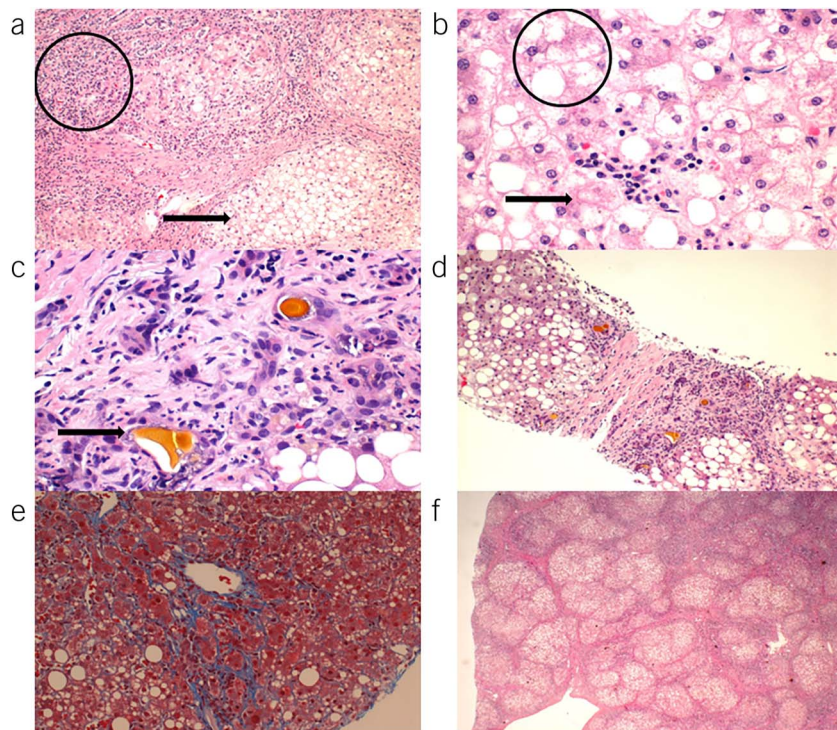


Figure 4. Histologic features of alcoholic hepatitis: (a) circle represents lobular inflammation and arrow represents steatosis, (b) hepatocyte ballooning, (c) cholestasis with bile canaliculi and hepatocyte plugging, (d) steatosis and fibrosis, (e) chicken wire and pericellular fibrosis, and (f) cirrhosis.

Although low caloric intake (<21.5 kcal/kg/d) is associated with increased risk of 28-day mortality (192), the caloric intake goal of 35 kcal/kg/d with 1.2–1.5 g/kg of protein for people with AH is based on work in populations with critical illness and not necessarily AH (148). The most beneficial route of feeding remains unclear and is generally tailored to a patient's ability to safely eat by mouth. A randomized study of enteral feeding compared with oral feeding in 136 biopsy-proven patients with severe AH showed no difference in survival; however, a caloric intake of <21.5 kcal/kg/d irrespective of the trial arm was associated with higher mortality at 6 months (62.9 vs 34.2%, $P < 0.001$) (192). Similarly, the efficacy of enteral feeding as an intervention compared with steroids in 71 patients showed noninferiority for short-term (28-day) survival, but deaths occurred earlier in the enteral feeding arm (193). In a small trial comparing nasogastric with nasojejunal tube feeding, there was no difference in the amount of successfully delivered daily calories (194). It should be noted that feeding tubes can be safely placed in patients with esophageal varices without active bleeding or who have not undergone recent endoscopic variceal banding (195). In those who cannot eat by mouth or have a contraindication to enteral feeding, total parenteral nutrition may be used. Total parenteral nutrition has no short-term survival advantage when compared with oral and enteral feeding in moderate or severe AH (196).

Amino acid supplementation has been studied in patients with AH with mixed results. In a small, 28-day study of patients with AH provided a 3,000 kcal diet with 100 g protein, those who received 70–85 g of IV amino acids daily had a 100% 28-day survival, whereas those who did not had a survival rate of 78% (197). Several subsequent studies of daily amino acid supplements (mixed and branch chain) found no survival benefit in AH (198–200). Vitamin

and mineral deficiencies are also common in patients with AH. As patients with AH have recent harmful alcohol use, supplementing with thiamine may help prevent Wernicke encephalopathy (148). However, a meta-analysis of various mixed nutritional supplements (amino acids, vitamins, minerals, and lipid) found no mortality benefit in AH (201). Supplementing select trace elements may be considered. A recent study found that 85% of patients with AH are zinc deficient, and zinc deficiency was an independent predictor of 28-day mortality with an odds ratio of 10.6 per 1 $\mu\text{mol/L}$ decrease in serum zinc level (202). Although zinc supplementation has been included as an intervention for AH in clinical trials (203), studies of the therapeutic effect of zinc alone are limited.

Recommendation

- In patients with severe AH (MELD >20), we recommend treatment with corticosteroid therapy if there are no contraindications (strong recommendation, moderate level of evidence).

Key concept/statement

- Patients with severe AH and MELD scores ranging from 25 to 39 derive maximum benefit from the use of corticosteroids; careful consideration of risks and benefits is warranted if considering corticosteroids for those with MELD >50.
- Response to corticosteroid treatment can be assessed based on the Lille score at day 7 or day 4. Among nonresponders (Lille score >0.45), corticosteroids should be discontinued.

Corticosteroids

The first randomized controlled study to assess efficacy of corticosteroids in the treatment of AH was published in 1971 (204). A Cochrane review of 16 randomized controlled studies showed no difference between corticosteroids and placebo (or no intervention) on all-cause mortality, health-related quality of life, and serious adverse events, although the quality of evidence was classified as very low or low (205). In a pooled analysis, using individual level data from the 5 largest randomized controlled studies (193,206–209), corticosteroids provided a survival benefit at 28 days (80% vs 66%, $P < 0.0001$) (210). The largest single randomized, placebo-controlled multicenter study from the United Kingdom (the STOPAH study) of 1,103 patients with severe AH randomized to 28 days of prednisolone or placebo showed only a trend for mortality benefit (13.8% vs 18%, $P = 0.056$) and an overall lower frequency of mortality in this cohort than previous studies (160), likely reflecting improved management of advanced liver disease. Finally, an updated meta-analysis of more contemporary randomized studies (including the STOPAH study) showed that corticosteroids were effective in reducing short-term mortality by 36% (211).

Given the variable severity of individuals presenting with AH, corticosteroids may be more effectively used if targeted to those most likely to respond, with early cessation of steroid therapy in those unlikely to respond. A recent worldwide retrospective multicenter cohort of individuals with severe AH demonstrated that the 28-day corticosteroid survival benefit is seen in those with MELD scores ranging from 21 to 39, with limited benefit in the 40–50 range and no benefit with MELD scores above 50 (74). The Lille score at day 4 of corticosteroid therapy has been shown to be as accurate as day 7 Lille score in predicting the outcome and response to treatment (212) and has since been validated (213). Predicting which individuals will have a spontaneous recovery without steroid use is of great interest given the side effect profile. In a recent study of 426 patients with AH, the trajectory of serum bilirubin over the course of admission was categorized into “fast fallers,” “static,” and “rapid risers.” Fast fallers (those with a bilirubin $<0.8 \times$ admission value at day 7) had superior 90-day survival. In these individuals, use of corticosteroids showed no benefit (214).

Prednisolone has been more extensively studied and is generally used over prednisone. Prednisolone and prednisone are dosed 40 mg per day for a total duration of 4 weeks (Figure 3). IV methylprednisolone (32 mg per day) is an alternative for those unable to take medications orally. There is no evidence supporting the benefits of rapid vs slow tapering after the 4-week therapy.

Active infection including untreated HBV infection, uncontrolled diabetes mellitus, gastrointestinal bleeding, and severe renal failure is considered contraindications to the use of corticosteroids (215). However, corticosteroids can be started after adequate control or reversal of infection, renal failure, and gastrointestinal bleeding. For example, use of corticosteroids after adequate control of infection has been reported to provide benefit (216). Development of infections remains a concern among those treated with corticosteroids (217), particularly the risk of fungal infections (182). In the STOPAH study, use of prophylactic antibiotics as an adjunct to corticosteroids improved patient survival in those with adequate treatment of baseline infection and in those with a baseline bacterial DNA level of >18.5 pg/mL (181). Prophylactic amoxicillin/clavulanate in a recently concluded

randomized clinical trial as an adjuvant to prednisolone-reduced infection however did not improve patient survival (218).

Recommendations

18. We recommend against the use of PTX for individuals with severe AH (strong recommendation, moderate level of evidence).
19. There are insufficient data to determine the role of granulocyte colony-stimulating factor (G-CSF) and microbiome-based therapies in the treatment of severe AH (conditional recommendation, moderate level of evidence).
20. We recommend use of IV N-acetylcysteine as an adjuvant to corticosteroids in patients with severe AH (strong recommendation, moderate level of evidence).

Pentoxifylline

PTX is a phosphodiesterase inhibitor and inhibitor of tumor necrosis factor- α (TNF- α), one of the major cytokines speculated in the pathogenesis of AH (219,220). Despite the first seminal study showing benefit of PTX 400 mg 3 times a day for 28 days (221), there was no survival benefit in the STOPAH study (160). The most promising data for PTX were not effective in reducing the short-term mortality at 28 days (222). In addition, PTX was not effective as a salvage option for steroid nonresponders (223). In a meta-analysis of 10 randomized studies, PTX failed to show survival benefit at 1 month but was effective in reducing the occurrence of hepatorenal syndrome by 53% (224). In a network meta-analysis of 22 studies including the STOPAH study, there was low-quality evidence for benefit of PTX in reducing the short-term mortality at 28 days by 30% (222). In addition, PTX was not effective as an adjuvant therapy to corticosteroids (225,226). The exact mechanism of renal protection with PTX remains unclear.

G-CSF

G-CSF is proposed to have regenerative liver effects and has been studied in patients with severe AH deemed steroid ineligible or nonresponsive. Subsequently, meta-analyses have examined the efficacy of G-CSF in AH with 5 studies in Asia showing a 90-day survival benefit and 2 studies in Europe showing no survival benefit but rather a trend to increased mortality. It has been proposed that study design variability accounted for mixed results (227,228). The combination of G-CSF and prednisolone has also yielded mixed results with a recent US trial showing equivalent 90-day survival to prednisolone (0.73 [95% CI 0.44–0.89] vs 0.83 [95% CI 0.57–0.94]; $P > 0.05$) (229), while a study from Asia (NCT04066179) comparing G-CSF alone (N = 42), prednisolone alone (N = 42), and the combination of G-CSF + prednisolone (N = 42) showed 64.3%, 78.6%, and 88.1% 90-day survival, respectively ($P = 0.03$) (230). Further studies are needed to determine whether G-CSF, alone or in combination with corticosteroids, has efficacy in decreasing mortality in AH.

N-acetyl cysteine

N-acetyl cysteine (NAC) has proven benefit in acetaminophen toxicity and was initially studied in AH in combination with other antioxidants without observed benefit (231). Furthermore, monotherapy NAC infusion (vs placebo) over 14 days did not show any survival benefit at 1 and 6 months (232). Two studies

evaluating NAC as an adjuvant to prednisolone showed divergent results, with one showing improved survival at 1 month (but not at 3 and 6 months) (233) and another without 30-day survival benefit (234). Both studies were of modest sample size and had differences in MELD scores between treatment groups (29.2 ± 6.3 vs 25.5 ± 6.4 , $P = 0.03$) (234) limiting interpretation. A network meta-analysis comparing various pharmacological agents showed moderate quality evidence that a combination of prednisolone and 5 days of NAC infusion provides the best survival benefit at 28 days with 85% risk reduction of death from AH (222). Based on this evidence and considering its excellent safety profile, ACG has recommended that IV NAC may be used as an adjuvant to steroids; however, other society guidelines have not included such a recommendation. Additional clinical trials are ongoing.

Anti-inflammatory drugs

Based on preclinical efficacy and beneficial effects in open label trials, TNF inhibitors were initially promising; however, randomized trials in severe AH were terminated early because of a higher number of deaths in treatment arms, with most deaths due to infections (235,236). The mechanisms of these findings are believed to be due to blockade of the beneficial effects of TNF on hepatic regeneration (237). Results of a trial comparing methylprednisolone (28 days) with a combination of the IL-1 receptor antagonist anakinra (14 days) plus PTX (28 days) plus zinc (180 days) for the treatment of severe AH showed no survival difference at 28, 90, or 180 days (203).

Microbiome modulation

Despite enthusiasm for probiotic use, data are lacking regarding benefits in AH, with studies limited by small sample size and lack of inclusion of patients with severe AH (238–240). The first fecal microbiota transplantation (FMT) trial in 8 subjects with AH having contraindications to steroid therapy showed encouraging results (241) and has since been followed by a randomized controlled trial comparing FMT ($N = 55$) with prednisolone ($N = 57$) with improved 90-day survival in the FMT arm compared with the prednisolone arm (75% vs 57% $P = 0.044$) (242). Although fewer infections were seen in the FMT arm of the aforementioned study, given the relative immunocompromised status of patients with severe AH, the risks and benefits of FMT must be considered because infections from donor stool have been reported (243) leading to several US FDA alerts in the past few years. Clinical trials of FMT for the treatment of AH are ongoing.

Miscellaneous therapies

Antioxidant cocktails and vitamin E have not shown benefit in severe AH (209,231,244). The antioxidant S-adenosylmethionine, when added to prednisolone, showed no 28-day survival benefit over prednisolone alone; however, there were fewer cases of hepatorenal syndrome observed with the antioxidant arm (245). Hepatic regenerative capacity supported by bone marrow-derived stem cells and hepatic progenitor cells seems clinically important (246,247). However, drugs targeting this capacity including insulin and glucagon (248,249), the anabolic steroid oxandrolone (250), and propylthiouracil (251) have not demonstrated mortality benefit. The molecular adsorbent recycling

system safely improves cholestatic pruritus and renal function without any significant improvement in survival (252). Furthermore, a preliminary report of plasma exchange in a randomized trial of 50 patients with ACLF showed improved 1-year survival; however, it was unclear how many of these patients had AH (253).

Clinical trials

Active studies for AH including therapeutics targeting hyaluronic acid (NCT0501848) and epigenetic pathways using an endogenous sulfated oxysterol, larsucosterol (NCT04563026), and IL-1 inhibition (NCT03775109) are in progress.

LT

Recommendation

21. In patients with severe AH who are unresponsive to medical management with high risk of death, early LT for highly selected patients should be considered, according to regional and institutional protocols (conditional recommendation, low level of evidence).

Key concept/statement

28. For patients with severe AH who are nonresponsive to corticosteroids and ineligible for early LT having 4 or more organ failures, palliative therapy would be appropriate.

Retrospective and prospective studies have established a survival benefit in offering LT to appropriately selected patients with severe AH unresponsive to or with contraindications to corticosteroids. The initial landmark study on 26 patients with severe AH unresponsive to corticosteroids who were selected to receive LT without a mandated period of sobriety had a 2-year survival of 72% compared with 24% survival in patients with severe AH not eligible for LT (254). A larger prospective multicenter Franco-Belgium study (QUICK-TRANS) evaluated survival and alcohol relapse among those with severe AH who did not respond to medical management and who were evaluated for LT using an objective score based on standardized selection criteria (159). Patients with a score of >220 of a maximum score of 250 selected for LT (early LT group, $N = 102$) were compared with patients not eligible for LT (non-LT group, $N = 47$) and with patients with ALD cirrhosis listed for LT after at least 6 months of abstinence (standard LT group, $N = 127$) (159). After 2 years of follow-up, posttransplant survival was similar between the early LT group and the standard LT group (HR 0.87, 95% CI 0.33–2.26) but was significantly higher compared with the non-LT group (HR 0.27, 95% CI 0.16–0.47). In a large multicenter retrospective US study (American Consortium for Early Liver Transplantation [ACCELERATE]-AH) of 147 patients with severe AH unresponsive to medical management, 3-year patient survival was 84%, similar to historical controls with ALD cirrhosis with mandated sobriety periods (83%) (11,255). Several subsequent retrospective and small prospective studies have confirmed that outcomes of early LT in patients with severe AH are similar to LT for ALD cirrhosis with mandated periods of abstinence (256,257). In a meta-analysis of 11 studies on LT for ALD, the pooled patient survival rate at 6 months was 0.85 (95% CI

0.77–0.91) and 0.80 (95% CI 0.69–0.88) among patients receiving early LT for severe AH (257).

Key concepts/statements

29. Selection for LT in patients with ALD should not be based solely on an arbitrary duration of sobriety. A comprehensive psychosocial evaluation by a social worker and an addiction specialist should be used to inform transplant team decision-making.
30. Tools such as Stanford Integrated Psychosocial Assessment Tool, High Risk for Alcohol Relapse Score, Michigan Alcoholism Prognostics Score, Hopkins Psychosocial Score, and Sustained Alcohol Use Posttransplant (SALT) Score may be used in addition to the addiction team's evaluation in assessing LT candidacy.

In a meta-analysis of 11 studies on LT for ALD, including those with AH, the pooled alcohol use recurrence rate was 0.22 (95% CI 0.12–0.36) and 0.20 (95% CI 0.07–0.43) in a subgroup of patients with severe AH receiving early LT, OR = 1.68 (95% CI 0.79–3.58, $P = 0.2$) (257). The rates of alcohol relapse among recipients of LT for AH were evaluated prospectively in the QUICK-Trans study using the timeline follow-back survey (159). The rate of relapse was not significantly different between the early vs standard LT (≥ 6 months sobriety) groups (34% vs 25%; $P = 0.45$) at 2-year follow-up, although the rates of high alcohol intake were greater in the early LT group (absolute difference 16.7%, 95% CI 5.8–27.6). In the ACCELERATE-AH cohort, where biomarker testing was used to supplement assessment of alcohol relapse, the cumulative incidence of any relapse was 25% (95% CI 18%–34%) at 1-year and 34% (95% CI 25%–44%) at 3-year post-LT, with the cumulative incidence of sustained alcohol use being 10% at 1-year (95% CI 6%–18%) and 17% at 3-year (95% CI 10%–27%) post-LT (258). Early onset (< 1 -year post-LT) and heavy patterns of alcohol use are associated with reduced post-LT survival (258–260) among patients transplanted for AH.

Although length of abstinence predicts alcohol use after LT, other factors such as untreated psychiatric disease, history of polysubstance abuse, history of legal consequences related to alcohol use, lack of insight, lack of willingness to engage in AUD treatment, multiple prior failed rehabilitation attempts, and lack of social support are stronger variables associated with recurrent alcohol use after LT (261). Furthermore, a recent study showed 3-year patient survival rates after LT to be lower in those with a history of decompensation vs first episode (72% vs 83%, $P = 0.01$) (262).

Selection of patients with severe AH for LT requires a rigorous psychosocial evaluation by a multidisciplinary team including social workers and addiction counselors and psychiatrists. Tools such as Stanford Integrated Psychosocial Assessment Tool (261,263), High Risk for Alcohol Relapse Score, Michigan Alcoholism Prognostics Score, Hopkins Psychosocial Score, and SALT score may be used to determine risk of recurrent alcohol use after LT (100,264,265). However, most of these scores are not accurate in identifying patients who are at high risk for recurrent alcohol use but rather are accurate in predicting a low likelihood of relapse. For example, the SALT score has a negative predictive value of 90%–95% (not likely to have recurrent alcohol use after LT) but a positive predictive value of only 25%–50% (likely to have recurrent drinking) (266). This was also exemplified in the recently reported data from the QUICK-TRANS study, with harmful

alcohol use at 2-year follow-up of 22% in the early LT group compared with 5.4% in the standard LT group, despite an objective score used for listing with 200 of 250 points in the score ascribed to detailed psychosocial evaluation (159). Alcohol biomarkers can be used to supplement self-reported information for accurate detection of alcohol use among patients waitlisted for better selection of those who ultimately end up receiving LT. Biomarker use should be ethical and transparent because positive biomarkers may have a long-lasting stigmatizing effect on patients with ALD and may also lead to decreased access to LT (267,268). Clearly, there remains an unmet need in the field for accurate, objective tools for patient selection for early LT in patients with ALD.

Key concepts/statements

31. LT recipients should be monitored for alcohol use using self-report tools or alcohol biomarkers with the goal of early detection to provide interventions to support return to abstinence.
32. Multidisciplinary integrated care model is recommended for LT recipients to reduce recurrent alcohol use and improve long-term outcomes.

Patients waiting on the transplant list should be monitored for alcohol consumption because approximately 17%–30% of these patients may relapse to alcohol use (269,270). When integrated into transplant center protocols, biomarkers can detect harmful drinking where relapse to alcohol can significantly harm the allograft and lead to decreased posttransplant survival (258,259). Postliver transplant, approximately 30%, will experience a slip or sustained alcohol use within a follow-up period of 2 years (159,258,259). As AUD is a chronic disorder, strategies to reduce risk of relapse are highly recommended. An integrated multidisciplinary care model for LT candidates and recipients should be the goal, with hepatologists providing liver-focused care and addiction specialists providing AUD-focused care, longitudinally. In a prospective, noncontrolled pilot program assessing a multidisciplinary care model for AUD in the pretransplant and posttransplant care of patients with < 6 months of sobriety before LT, only 3 of 44 patients relapsed to alcohol use (mean follow-up period = 339 days) (271). In a meta-analysis of 6 studies on 649 patients transplanted for ALD, a multidisciplinary integrated care model compared with follow-up by hepatology alone in a transplant clinic was associated with lower rates of relapse to alcohol use and long-term patient mortality, with the respective odds ratio of 0.56 (95% CI 0.36–0.87) and 0.29 (95% CI 0.08–0.99) (137). Use of medications to reduce cravings may be considered, although there are no studies of the efficacy of medication-associated therapy in liver transplant recipients.

Key concept/statement

33. Early and/or heavy alcohol use is a risk for graft loss and long-term patient mortality and requires an aggressive intervention to achieve abstinence.

Alcohol use affects long-term survival of LT patients because those with early, sustained nonheavy use and early, heavy use (binge drinking or frequent drinking defined as drinking 4 or more days in the week) have a significantly lower 3-year survival compared with those who remained abstinent or have late,

Table 6. Prospective areas of clinical-translational research**A. Epidemiology and prevention**

1. Factors in addition to alcohol contributing to the high prevalence of ALD globally
2. Factors, including social determinants of health, contributing to the higher prevalence of ALD among young women
3. Population-based studies on prevalence of early spectrum of alcohol-associated liver disease and steatohepatitis
4. Cost-effective measures to reduce alcohol consumption
5. Reliable and accurate models to predict alcohol relapse
6. Studies on efficacy and safety of US FDA and non-US FDA-approved therapies comparing patients with and without ALD
7. Clinical utility determination and validation of biomarkers for predicting alcohol consumption
8. Identification of genetic factors predicting response to abstinence
9. Studies regarding alcohol additives and adulterants on the trajectory of ALD, particularly with increasing observational data of the protective effects of coffee drinking on liver health
10. Studies examining drinking thresholds and comorbidities warranting screening for ALD
11. Studies examining NIT-based detection of early ALD in individuals with harmful drinking and associated with liver-related outcomes

B. Pharmacological therapies

1. Developing animal models simulating human AH phenotype
2. Noninvasive accurate biomarkers for predicting response to corticosteroids
3. Safer and effective targets and for treatment of alcohol-associated hepatitis
4. Drugs for improving the long-term outcome with improvement in fibrosis

C. Liver transplantation

1. Multicenter prospective data on liver transplantation in alcohol-associated hepatitis
2. Criteria for patient selection for liver transplantation in alcohol-associated hepatitis
3. Immunosuppression and antibiotic prophylaxis in peritransplantation period
4. Biomarkers for early diagnosis of infections in patients with AH
5. Protocol for malignancy surveillance before and after transplantation
6. Genetic factors to predict recurrent disease in the graft among patients who relapse

AH, alcohol-associated hepatitis; ALD, alcohol-associated liver disease; FDA, Food Drug Administration; NIT, noninvasive blood and/or radiological tests.

nonheavy use: 81% vs 53% vs 99%–100% ($P < 0.001$) (258). In a meta-analysis of 7 studies for alcohol-associated cirrhosis, the pooled annual alcohol recurrence rates were 4.7% (3.0%–6.4%) for any alcohol use and 2.9% (0.5%–5.3%) for harmful alcohol use. Among recipients needing a liver biopsy for their clinical care, those with recurrence of alcohol use compared with abstainers had increased odds for steatohepatitis (OR 4.5, 95% CI 1.4–14.2), AH (OR 9.3, 95% CI 1.01–85), and advanced fibrosis or cirrhosis (OR 8.4, 95% CI 3.5–20). Furthermore, mortality at 10 years after LT was over 3-fold higher among recipients with

recurrent alcohol use compared with abstainers (OR 3.67, 95% CI 1.42–9.50) (259). Recurrent alcohol-associated cirrhosis occurring in 9% of biopsied patients and 2% of all transplants was responsible for approximately 20% of posttransplant deaths. Early onset (<1-year post-LT) and heavy patterns of alcohol use are associated with reduced post-LT survival (258–260) among patients transplanted for AH.

PUBLIC POLICY AND PREVENTION**Key concept/statement**

34. Public policy interventions can reduce the burden of AUD and alcohol-associated liver complications and should be more widely used to reduce alcohol-related morbidity and mortality.

Policy measures aimed at reducing alcohol use include taxation, reduced availability, and restricted promotion of alcohol-containing beverages. Effective alcohol policy measures have been shown to reduce alcohol-related mortality, including ALD-related mortality (272,273). Cost-effective measures include increase in taxes on sales of alcohol, alcohol marketing restrictions including ban on advertising alcohol on public platforms, raising the legal age for alcohol purchases, psychosocial interventions from clinicians, limitations on public drinking, and stricter legal consequences for driving while intoxicated (274). In the United States (275) and Latin America (276), strict alcohol policy environments, especially alcohol taxes, were associated with lower ALD cirrhosis mortality rates. Benefits to society, however, can take years to realize after policy change. A recent US study revealed that states enacting stricter alcohol policies experienced declines in ALD mortality, with the mortality effect lagging 5 years after policy change (277). Associations between tariffs on alcohol and rates of hospitalizations for AH and LT for ALD suggest that public health benefits can be achieved by excise taxing of alcohol (278). The effect of cold climate and limited daylight hours on escalated alcohol drinking have been reported (279) and may help to inform geotemporal alcohol policy efforts. Education is an important supplement to public policies noted above but may be less effective in the absence of policy interventions. Examples of education include youth-focused education in school, after-school programs, and parental education. Population-based screening tools and algorithms may also be effective to identify AUD and diagnose ALD at a population level.

CONCLUSIONS AND PROSPECTS

Healthcare burdens from AUD and ALD are significant in the United States and worldwide and are increasing in recent years. Providers in all clinical areas must be prepared to care for this growing population of patients. Patients with ALD often present at an advanced stage are rarely offered AUD treatment and have few effective therapies aimed at their liver disease. With continued and increasing interest of researchers and funding organizations especially the NIAAA, there seems light at the end of the tunnel with a promising future to fill the knowledge gap in several unmet clinical needs in the field of ALD (Table 6). Policy aimed at alcohol use reduction, multidisciplinary care of the dual diagnoses of AUD and ALD, and refinement of LT algorithms for patients with severe AH are areas where research should be focused.

ACKNOWLEDGMENTS

This guideline document was developed in collaboration with the practice guideline committee of the American College of Gastroenterology. We acknowledge and thank the services of Leslie Hassett, MLS, for the systematic literature search and Theresa Johnson (both of Mayo Clinic) for administrative assistant support.

CONFLICTS OF INTEREST

Guarantor of the article: Vijay H. Shah, MD.

Specific author contributions: All the authors wrote different key portions of these guidelines, were involved in regular teleconferences with the guideline committee members for making appropriate revisions, and all approved the final document.

Financial Support: NIH U01 AA021788 (V.H.S.), NIH K08DK123381 (L.L.J.). American College of Gastroenterology Faculty Development grant, NIH R21 AA023273 (A.S.) and NIAAA 1U01AA021908-01 (R.B.).

Potential competing interests: Echosens (R.B.); Novartis, Merck, Durect (V.H.S., N.A.T.); Abbvie, Galectin, Bausch/Salix, Aldeyra (L.L.J.); Pleiogenix Pharmaceuticals and Durect Pharmaceuticals (A.S.).

REFERENCES

- Singal A, Mathurin P. Diagnosis and treatment of alcohol-associated liver disease: A review. *JAMA* 2021;326(2):165–76.
- Battaller R, Arab JP, Shah VH. Alcohol-associated hepatitis. *N Engl J Med* 2022;387(26):2436–48.
- Yoon Y-H, Chen CM, Yi H-y. Liver Cirrhosis Mortality in the United States: National, State, and Regional Trends, 2000–2011. National Institutes of Health: Arlington, VA, 2014. Report no.: surveillance report #100, December.
- Organization WHW. Alcohol 2022. (<https://www.who.int/news-room/fact-sheets/detail/alcohol>)
- Chen CM, Yoon Y-H. Liver cirrhosis mortality in the united states: national, state, and regional trends, 2000–2019. National Institutes of Health: Sterling, VA, 2022. February.
- Hirode G, Saab S, Wong RJ. Trends in the burden of chronic liver disease among hospitalized US adults. *JAMA Netw Open* 2020;3(4):e201997.
- Philip G, Hookey L, Richardson H, et al. Alcohol-associated liver disease is now the most common indication for liver transplant waitlisting among young American adults. *Transplantation* 2022;106(10):2000–5.
- Cholankeril G, Goli K, Rana A, et al. Impact of COVID-19 pandemic on liver transplantation and alcohol-associated liver disease in the USA. *Hepatology* 2021;74(6):3316–29.
- Singal AK, Arsalan A, Dunn W, et al. Alcohol-associated liver disease in the United States is associated with severe forms of disease among young, females and Hispanics. *Aliment Pharmacol Ther* 2021;54(4):451–61.
- Singal AK, Arora S, Wong RJ, et al. Increasing burden of acute-on-chronic liver failure among alcohol-associated liver disease in the young population in the United States. *Am J Gastroenterol* 2020;115(1):88–95.
- Lee BP, Vittinghoff E, Dodge JL, et al. National trends and long-term outcomes of liver transplant for alcohol-associated liver disease in the United States. *JAMA Intern Med* 2019;179(3):340–8.
- Pollard MS, Tucker JS, Green HD Jr. Changes in adult alcohol use and consequences during the COVID-19 pandemic in the US. *JAMA Netw Open* 2020;3(9):e2022942.
- Kuo YF, Kwo P, Wong RJ, et al. Impact of COVID-19 on liver transplant activity in the USA: Variation by etiology and cirrhosis complications. *J Clin Transl Hepatol* 2023;11(1):130–5.
- Yeo YH, He X, Ting PS, et al. Evaluation of trends in alcohol use disorder-related mortality in the US before and during the COVID-19 pandemic. *JAMA Netw Open* 2022;5:e2210259.
- Bertha M, Shedden K, Mellinger J. Trends in the inpatient burden of alcohol-related liver disease among women hospitalized in the United States. *Liver Int* 2022;42(7):1557–61.
- Mellinger JL, Fernandez A, Shedden K, et al. Gender disparities in alcohol use disorder treatment among privately insured patients with alcohol-associated cirrhosis. *Alcohol Clin Exp Res* 2019;43(2):334–41.
- Julien J, Ayer T, Tapper EB, et al. Effect of increased alcohol consumption during COVID-19 pandemic on alcohol-associated liver disease: A modeling study. *Hepatology* 2022;75(6):1480–90.
- Ndugga N, Lightbourne TG, Javaherian K, et al. Disparities between research attention and burden in liver diseases: Implications on uneven advances in pharmacological therapies in Europe and the USA. *BMJ Open* 2017;7(3):e013620.
- National Institute of Alcoholism and Alcohol Abuse. Alcohol Facts and Statistics. NIAAA, 2023 (<https://www.niaaa.nih.gov/about-niaaa>).
- Biddinger KJ, Emdin CA, Haas ME, et al. Association of habitual alcohol intake with risk of cardiovascular disease. *JAMA Netw Open* 2022;5(3):e223849.
- Corrao G, Aricò S, Lepore R, et al. Amount and duration of alcohol intake as risk factors of symptomatic liver cirrhosis: A case-control study. *J Clin Epidemiol* 1993;46:601–7.
- Roerecke M, Vafaei A, Hasan OSM, et al. Alcohol consumption and risk of liver cirrhosis: A systematic review and meta-analysis. *Am J Gastroenterol* 2019;114(10):1574–86.
- Simpson RF, Hermon C, Liu B, et al. Alcohol drinking patterns and liver cirrhosis risk: Analysis of the prospective UK million women study. *Lancet Public Health* 2019;4(1):e41–8.
- Ventura-Cots M, Argemi J, Jones PD, et al. Clinical, histological and molecular profiling of different stages of alcohol-related liver disease. *Gut* 2022;71(9):1856–66.
- Frezza M, di Padova C, Pozzato G, et al. High blood alcohol levels in women. The role of decreased gastric alcohol dehydrogenase activity and first-pass metabolism. *N Engl J Med* 1990;322(2):95–9.
- Bala S, Marcos M, Gattu A, et al. Acute binge drinking increases serum endotoxin and bacterial DNA levels in healthy individuals. *PLoS One* 2014;9(5):e96864.
- Torp N, Israelsen M, Nielsen MJ, et al. Binge drinking induces an acute burst of markers of hepatic fibrogenesis (PRO-C3). *Liver Int* 2022;42(1):92–101.
- Israelsen M, Alvarez-Silva C, Madsen BS, et al. Impact of acute alcohol consumption on circulating microbiome in asymptomatic alcohol-related liver disease. *Gut* 2023. [Online ahead of print.]
- Askgaard G, Grønbaek M, Kjaer MS, et al. Alcohol drinking pattern and risk of alcoholic liver cirrhosis: A prospective cohort study. *J Hepatol* 2015;62(5):1061–7.
- Ventura-Cots M, Watts AE, Battaller R. Binge drinking as a risk factor for advanced alcoholic liver disease. *Liver Int* 2017;37(9):1281–3.
- Becker U, Grønbaek M, Johansen D, et al. Lower risk for alcohol-induced cirrhosis in wine drinkers. *Hepatology* 2002;35(4):868–75.
- Kerr WC, Fillmore KM, Marvy P. Beverage-specific alcohol consumption and cirrhosis mortality in a group of English-speaking beer-drinking countries. *Addiction* 2000;95(3):339–46.
- Hagström H, Hemmingsson T, Discacciati A, et al. Risk behaviors associated with alcohol consumption predict future severe liver disease. *Dig Dis Sci* 2019;64(7):2014–23.
- Hrubec Z, Omenn GS. Evidence of genetic predisposition to alcoholic cirrhosis and psychosis: Twin concordances for alcoholism and its biological end points by zygosity among male veterans. *Alcohol Clin Exp Res* 1981;5(2):207–15.
- Buch S, Stickel F, Trépo E, et al. A genome-wide association study confirms PNPLA3 and identifies TM6SF2 and MBOAT7 as risk loci for alcohol-related cirrhosis. *Nat Genet* 2015;47(12):1443–8.
- Salameh H, Raff E, Erwin A, et al. PNPLA3 gene polymorphism is associated with predisposition to and severity of alcoholic liver disease. *Am J Gastroenterol* 2015;110(6):846–56.
- Whitfield JB, Schwantes-An TH, Darlay R, et al. A genetic risk score and diabetes predict development of alcohol-related cirrhosis in drinkers. *J Hepatol* 2022;76(2):275–82.
- Stickel F, Buch S, Nischalke HD, et al. Genetic variants in PNPLA3 and TM6SF2 predispose to the development of hepatocellular carcinoma in individuals with alcohol-related cirrhosis. *Am J Gastroenterol* 2018;113(10):1475–83.
- Strnad P, Buch S, Hamesch K, et al. Heterozygous carriage of the alpha1-antitrypsin Pi*Z variant increases the risk to develop liver cirrhosis. *Gut* 2019;68(6):1099–107.
- Beaudoin JJ, Long N, Liangpunsakul S, et al. An exploratory genome-wide analysis of genetic risk for alcoholic hepatitis. *Scand J Gastroenterol* 2017;52(11):1263–9.

41. Atkinson SR, Way MJ, McQuillin A, et al. Homozygosity for rs738409:G in PNPLA3 is associated with increased mortality following an episode of severe alcoholic hepatitis. *J Hepatol* 2017;67(1):120–7.
42. Klatsky AL, Armstrong MA. Alcohol, smoking, coffee, and cirrhosis. *Am J Epidemiol* 1992;136(10):1248–57.
43. Dam MK, Flensburg-Madsen T, Eliassen M, et al. Smoking and risk of liver cirrhosis: A population-based cohort study. *Scand J Gastroenterol* 2013;48(5):585–91.
44. Liu B, Balkwill A, Roddam A, et al. Separate and joint effects of alcohol and smoking on the risks of cirrhosis and gallbladder disease in middle-aged women. *Am J Epidemiol* 2009;169(2):153–60.
45. Premkumar M, Anand AC. Tobacco, cigarettes, and the liver: The smoking gun. *J Clin Exp Hepatol* 2021;11(6):700–12.
46. Castellsagué X, Quintana MJ, Martínez MC, et al. The role of type of tobacco and type of alcoholic beverage in oral carcinogenesis. *Int J Cancer* 2004;108(5):741–9.
47. Petrick JL, Campbell PT, Koshiol J, et al. Tobacco, alcohol use and risk of hepatocellular carcinoma and intrahepatic cholangiocarcinoma: The Liver Cancer Pooling Project. *Br J Cancer* 2018;118(7):1005–12.
48. Soeda J, Morgan M, McKee C, et al. Nicotine induces fibrogenic changes in human liver via nicotinic acetylcholine receptors expressed on hepatic stellate cells. *Biochem Biophys Res Commun* 2012;417(1):17–22.
49. Jensen K, Afroze S, Ueno Y, et al. Chronic nicotine exposure stimulates biliary growth and fibrosis in normal rats. *Dig Liver Dis* 2013;45(9):754–61.
50. Hart CL, Morrison DS, Batty GD, et al. Effect of body mass index and alcohol consumption on liver disease: Analysis of data from two prospective cohort studies. *BMJ* 2010;340:c1240.
51. Loomba R, Yang HI, Su J, et al. Obesity and alcohol synergize to increase the risk of incident hepatocellular carcinoma in men. *Clin Gastroenterol Hepatol* 2010;8(10):891–8, 898.e1–2.
52. Inan-Eroglu E, Huang BH, Ahmadi MN, et al. Joint associations of adiposity and alcohol consumption with liver disease-related morbidity and mortality risk: Findings from the UK biobank. *Eur J Clin Nutr* 2022;76(1):74–83.
53. Moriya A, Iwasaki Y, Ohguchi S, et al. Alcohol consumption appears to protect against non-alcoholic fatty liver disease. *Aliment Pharmacol Ther* 2011;33(3):378–88.
54. Moriya A, Iwasaki Y, Ohguchi S, et al. Roles of alcohol consumption in fatty liver: A longitudinal study. *J Hepatol* 2015;62(4):921–7.
55. Chang Y, Ryu S, Kim Y, et al. Low levels of alcohol consumption, obesity, and development of fatty liver with and without evidence of advanced fibrosis. *Hepatology* 2020;71(3):861–73.
56. Peeraphatdit TB, Ahn JC, Choi DH, et al. A cohort study examining the interaction of alcohol consumption and obesity in hepatic steatosis and mortality. *Mayo Clin Proc* 2020;95(12):2612–20.
57. Aberg F, Helenius-Hietala J, Puukka P, et al. Interaction between alcohol consumption and metabolic syndrome in predicting severe liver disease in the general population. *Hepatology* 2018;67(6):2141–9.
58. Mellinger JL, Shedden K, Winder GS, et al. Bariatric surgery and the risk of alcohol-related cirrhosis and alcohol misuse. *Liver Int* 2021;41(5):1012–9.
59. Alvarado-Tapias E, Marti-Aguado D, Kennedy K, et al. Bariatric surgery is associated with alcohol-related liver disease and psychiatric disorders associated with AUD. *Obes Surg* 2023;33(5):1494–505.
60. Kim HP, Jiang Y, Farrell TM, et al. Roux-en-Y gastric bypass is associated with increased hazard for de novo alcohol-related complications and liver disease. *J Clin Gastroenterol* 2022;56(2):181–5.
61. Yarra P, Dunn W, Younossi Z, et al. Association of previous gastric bypass surgery and patient outcomes in alcohol-associated cirrhosis hospitalizations. *Dig Dis Sci* 2023;68(3):1026–34.
62. Poynard T, Bedossa P, Opolon P. Natural history of liver fibrosis progression in patients with chronic hepatitis C. The OBSVIRC, METAVIR, CLINIVIR, and DOSVIRC groups. *Lancet* 1997;349(9055):825–32.
63. Llamas-Falcón L, Shield KD, Gelovany M, et al. Impact of alcohol on the progression of HCV-related liver disease: A systematic review and meta-analysis. *J Hepatol* 2021;75(3):536–46.
64. Hassan MM, Hwang LY, Hatten CJ, et al. Risk factors for hepatocellular carcinoma: Synergism of alcohol with viral hepatitis and diabetes mellitus. *Hepatology* 2002;36(5):1206–13.
65. Stroffolini T, Cotticelli G, Medda E, et al. Interaction of alcohol intake and cofactors on the risk of cirrhosis. *Liver Int* 2010;30(6):867–70.
66. Lin CW, Lin CC, Mo LR, et al. Heavy alcohol consumption increases the incidence of hepatocellular carcinoma in hepatitis B virus-related cirrhosis. *J Hepatol* 2013;58(4):730–5.
67. Tsai MC, Yang SS, Lin CC, et al. Association of heavy alcohol intake and ALDH2 rs671 polymorphism with hepatocellular carcinoma and mortality in patients with hepatitis B virus-related cirrhosis. *JAMA Netw Open* 2022;5(7):e2223511.
68. Morgan TR, Mandayam S, Jamal MM. Alcohol and hepatocellular carcinoma. *Gastroenterology* 2004;127(5 Suppl 1):S87–96.
69. Shoreibah M, Anand BS, Singal AK. Alcoholic hepatitis and concomitant hepatitis C virus infection. *World J Gastroenterol* 2014;20:11929–34.
70. Shah ND, Ventura-Cots M, Abalades JG, et al. Alcohol-related liver disease is rarely detected at early stages compared with liver diseases of other etiologies worldwide. *Clin Gastroenterol Hepatol* 2019;17(11):2320–9 e12.
71. Orntoft NW, Sandahl TD, Jepsen P, et al. Short-term and long-term causes of death in patients with alcoholic hepatitis in Denmark. *Clin Gastroenterol Hepatol* 2014;12(10):1739–44.e1.
72. Kuitunen-Paul S, Roerecke M. Alcohol use disorders identification test (AUDIT) and mortality risk: A systematic review and meta-analysis. *J Epidemiol Community Health* 2018;72(9):856–63.
73. Stein E, Cruz-Lemini M, Altamirano J, et al. Heavy daily alcohol intake at the population level predicts the weight of alcohol in cirrhosis burden worldwide. *J Hepatol* 2016;65(5):998–1005.
74. Arab JP, Díaz LA, Baeza N, et al. Identification of optimal therapeutic window for steroid use in severe alcohol-associated hepatitis: A worldwide study. *J Hepatol* 2021;75(5):1026–33.
75. Asrani SK, Mellinger J, Arab JP, et al. Reducing the global burden of alcohol-associated liver disease: A blueprint for action. *Hepatology* 2021;73(5):2039–50.
76. Bradley KA, DeBenedetti AF, Volk RJ, et al. AUDIT-C as a brief screen for alcohol misuse in primary care. *Alcohol Clin Exp Res* 2007;31(7):1208–17.
77. O'Connor EA, Perdue LA, Senger CA, et al. Screening and behavioral counseling interventions to reduce unhealthy alcohol use in adolescents and adults: Updated evidence report and systematic review for the US preventive services task force. *JAMA* 2018;320(18):1910–28.
78. Inoue S, Chitambi C, Vinikoor MJ, et al. Testing the validity of the AUDIT-C and AUDIT-3 to detect unhealthy alcohol use among high-risk populations in Zambia: A secondary analysis from two randomized trials. *Drug Alcohol Depend* 2021;229(Pt A):109156.
79. Reed MB, Woodruff SI, DeMers GC, et al. Results of a randomized trial of screening, brief intervention, and referral to treatment (SBIRT) to reduce alcohol misuse among active-duty military personnel. *J Stud Alcohol Drugs* 2021;82(2):269–78.
80. Nadkarni A, Weobong B, Weiss HA, et al. Counselling for alcohol problems (CAP), a lay counsellor-delivered brief psychological treatment for harmful drinking in men, in primary care in India: A randomised controlled trial. *Lancet* 2017;389(10065):186–95.
81. Fulbrook P, Lawrence P, Watt K. Validity of the Paddington alcohol test in an Australian emergency department†. *Alcohol Alcohol* 2015;50(4):407–12.
82. Coulton S, Dale V, Deluca P, et al. Corrigendum: Screening for at-risk alcohol consumption in primary care: A randomized evaluation of screening approaches. *Alcohol Alcohol* 2018;53(4):499.
83. Cabezas J, Lucey MR, Bataller R. Biomarkers for monitoring alcohol use. *Clin Liver Dis (Hoboken)* 2016;8(3):59–63.
84. Andresen-Streichert H, Müller A, Glahn A, et al. Alcohol biomarkers in clinical and forensic contexts. *Dtsch Arztebl Int* 2018;115(18):309–15.
85. Stewart SH, Koch DG, Willner IR, et al. Hair ethyl glucuronide is highly sensitive and specific for detecting moderate-to-heavy drinking in patients with liver disease. *Alcohol Alcohol* 2013;48(1):83–7.
86. Stauer K, Andresen H, Vettorazzi E, et al. Urinary ethyl glucuronide as a novel screening tool in patients pre- and post-liver transplantation improves detection of alcohol consumption. *Hepatology* 2011;54(5):1640–9.
87. Armer JM, Gunawardana L, Allcock RL. The performance of alcohol markers including ethyl glucuronide and ethyl sulphate to detect alcohol use in clients in a community alcohol treatment programme. *Alcohol Alcohol* 2017;52(1):29–34.
88. Helander A, Böttcher M, Fehr C, et al. Detection times for urinary ethyl glucuronide and ethyl sulfate in heavy drinkers during alcohol detoxification. *Alcohol Alcohol* 2009;44(1):55–61.

89. Shukla L, Sharma P, Ganesha S, et al. Value of ethyl glucuronide and ethyl sulfate in serum as biomarkers of alcohol consumption. *Indian J Psychol Med* 2017;39(4):481–7.
90. Sterneck M, Yegles M, Rothkirch von G, et al. Determination of ethyl glucuronide in hair improves evaluation of long-term alcohol abstinence in liver transplant candidates. *Liver Int* 2014;34(3):469–76.
91. Wurst FM, Metzger J, WHO/ISBRA Study on State and Trait Markers of Alcohol Use and Dependence Investigators. The ethanol conjugate ethyl glucuronide is a useful marker of recent alcohol consumption. *Alcohol Clin Exp Res* 2002;26(7):1114–9.
92. Viel G, Boscolo-Berto R, Cecchetto G, et al. Phosphatidylethanol in blood as a marker of chronic alcohol use: A systematic review and meta-analysis. *Int J Mol Sci* 2012;13(11):14788–812.
93. Arnts J, Vanlerberghe BTK, Roozen S, et al. Diagnostic accuracy of biomarkers of alcohol use in patients with liver disease: A systematic review. *Alcohol Clin Exp Res* 2021;45(1):25–37.
94. Foxcroft DR, Smith LA, Thomas H, et al. Accuracy of alcohol use disorders identification test for detecting problem drinking in 18–35 year-olds in England: Method comparison study. *Alcohol Alcohol* 2015; 50(2):244–50.
95. Weinrieb RM, Van Horn DH, Lynch KG, et al. A randomized, controlled study of treatment for alcohol dependence in patients awaiting liver transplantation. *Liver Transpl* 2011;17(5):539–47.
96. Bruguera P, Barrio P, Oliveras C, et al. Effectiveness of a specialized brief intervention for at-risk drinkers in an emergency department: Short-term results of a randomized controlled trial. *Acad Emerg Med* 2018; 25(5):517–25.
97. Chi FW, Parthasarathy S, Palzes VA, et al. Alcohol brief intervention, specialty treatment and drinking outcomes at 12 months: Results from a systematic alcohol screening and brief intervention initiative in adult primary care. *Drug Alcohol Depend* 2022;235:109458.
98. Kaner EF, Beyer FR, Muirhead C, et al. Effectiveness of brief alcohol interventions in primary care populations. *Cochrane Database Syst Rev* 2018;2:CD004148.
99. Kelly JF, Humphreys K, Ferri M. Alcoholics anonymous and other 12-step programs for alcohol use disorder. *Cochrane Database Syst Rev* 2020;3:CD012880.
100. Arab JP, Izzy M, Leggio L, et al. Management of alcohol use disorder in patients with cirrhosis in the setting of liver transplantation. *Nat Rev Gastroenterol Hepatol* 2022;19(1):45–59.
101. Rogal S, Youk A, Zhang H, et al. Impact of alcohol use disorder treatment on clinical outcomes among patients with cirrhosis. *Hepatology* 2020; 71(6):2080–92.
102. Vannier AGL, Shay JES, Fomin V, et al. Incidence and progression of alcohol-associated liver disease after medical therapy for alcohol use disorder. *JAMA Netw Open* 2022;5:e2213014.
103. Avanceña ALV, Miller N, Uttal SE, et al. Cost-effectiveness of alcohol use treatments in patients with alcohol-related cirrhosis. *J Hepatol* 2021; 74(6):1286–94.
104. Yamini D, Lee SH, Avanesyan A, et al. Utilization of baclofen in maintenance of alcohol abstinence in patients with alcohol dependence and alcoholic hepatitis with or without cirrhosis. *Alcohol Alcohol* 2014; 49(4):453–6.
105. Pierce M, Sutherland A, Beraha EM, et al. Efficacy, tolerability, and safety of low-dose and high-dose baclofen in the treatment of alcohol dependence: A systematic review and meta-analysis. *Eur Neuropsychopharmacol* 2018;28(7):795–806.
106. Addolorato G, Leggio L, Ferrulli A, et al. Effectiveness and safety of baclofen for maintenance of alcohol abstinence in alcohol-dependent patients with liver cirrhosis: Randomised, double-blind controlled study. *Lancet* 2007;370(9603):1915–22.
107. Tyson LD, Cheng A, Kelleher C, et al. Acamprosate may be safer than baclofen for the treatment of alcohol use disorder in patients with cirrhosis: A first description of use in real-world clinical practice. *Eur J Gastroenterol Hepatol* 2022;34(5):567–75.
108. Ayyala D, Botlyan T, Tien C, et al. Naltrexone for alcohol use disorder: Hepatic safety in patients with and without liver disease. *Hepatol Commun* 2022;6(12):3433–42.
109. Jonas DE, Amick HR, Feltner C, et al. Pharmacotherapy for adults with alcohol use disorders in outpatient settings: A systematic review and meta-analysis. *JAMA* 2014;311(18):1889–900.
110. Chuong V, Farokhnia M, Khom S, et al. The glucagon-like peptide-1 (GLP-1) analogue semaglutide reduces alcohol drinking and modulates central GABA neurotransmission. *JCI Insight* 2023;8(12):8.
111. Vanjak D, Samuel D, Gosset F, et al. Fulminant hepatitis induced by disulfiram in a patient with alcoholic cirrhosis. Survival after liver transplantation [in French]. *Gastroenterol Clin Biol* 1989;13(12):1075–8.
112. Marti-Aguado D, Gougol A, Gomez-Medina C, et al. Prevalence and clinical impact of alcohol withdrawal syndrome in alcohol-associated hepatitis and the potential role of prophylaxis: A multinational, retrospective cohort study. *EClinicalMedicine* 2023;61:102046.
113. Sullivan JT, Sykora K, Schneiderman J, et al. Assessment of alcohol withdrawal: The revised clinical institute withdrawal assessment for alcohol scale (CIWA-Ar). *Br J Addict* 1989;84(11):1353–7.
114. Mayo-Smith MF, Beecher LH, Fischer TL, et al. Management of alcohol withdrawal delirium. An evidence-based practice guideline. *Arch Intern Med* 2004;164(13):1405–12.
115. Mayo-Smith MF. Pharmacological management of alcohol withdrawal. A meta-analysis and evidence-based practice guideline. American society of addiction medicine working group on pharmacological management of alcohol withdrawal. *JAMA* 1997;278(2):144–51.
116. Amato L, Minozzi S, Vecchi S, et al. Benzodiazepines for alcohol withdrawal. *Cochrane Database Syst Rev* 2010(3):CD005063.
117. Amato L, Minozzi S, Davoli M. Efficacy and safety of pharmacological interventions for the treatment of the Alcohol Withdrawal Syndrome. *Cochrane Database Syst Rev* 2011;2011(6):CD008537.
118. Bahji A, Bach P, Danilewitz M, et al. Comparative efficacy and safety of pharmacotherapies for alcohol withdrawal: A systematic review and network meta-analysis. *Addiction* 2022;117(10):2591–601.
119. Gershkovich P, Wasan KM, Ribeyre C, et al. Effect of variations in treatment regimen and liver cirrhosis on exposure to benzodiazepines during treatment of alcohol withdrawal syndrome. *Drugs Context* 2015; 4:212287.
120. Thiele M, Madsen BS, Hansen JF, et al. Accuracy of the enhanced liver fibrosis test vs FibroTest, elastography, and indirect markers in detection of advanced fibrosis in patients with alcoholic liver disease. *Gastroenterology* 2018;154(5):1369–79.
121. Rasmussen DN, Thiele M, Johansen S, et al. Prognostic performance of 7 biomarkers compared to liver biopsy in early alcohol-related liver disease. *J Hepatol* 2021;75(5):1017–25.
122. Nguyen-Khac E, Thiele M, Voican C, et al. Non-invasive diagnosis of liver fibrosis in patients with alcohol-related liver disease by transient elastography: An individual patient data meta-analysis. *Lancet Gastroenterol Hepatol* 2018;3(9):614–25.
123. Moreno C, Mueller S, Szabo G. Non-invasive diagnosis and biomarkers in alcohol-related liver disease. *J Hepatol* 2019;70(2):273–83.
124. Hinkson A, Lally H, Gibson H, et al. Meta-analysis: Enhanced liver fibrosis test to identify hepatic fibrosis in chronic liver diseases. *Aliment Pharmacol Ther* 2023;57(7):750–62.
125. Cai C, Song X, Chen X, et al. Transient elastography in alcoholic liver disease and nonalcoholic fatty liver disease: A systemic review and meta-analysis. *Can J Gastroenterol Hepatol* 2021;2021:8859338.
126. Pavlov CS, Casazza G, Semenistaia M, et al. Ultrasonography for diagnosis of alcoholic cirrhosis in people with alcoholic liver disease. *Cochrane Database Syst Rev* 2016;3:CD011602.
127. Ekstedt M, Hagström H, Nasr P, et al. Fibrosis stage is the strongest predictor for disease-specific mortality in NAFLD after up to 33 years of follow-up. *Hepatology* 2015;61(5):1547–54.
128. Soto M, Sampietro-Colom L, Lasalvia L, et al. Cost-effectiveness of enhanced liver fibrosis test to assess liver fibrosis in chronic hepatitis C virus and alcoholic liver disease patients. *World J Gastroenterol* 2017; 23(17):3163–73.
129. Asphaug L, Thiele M, Krag A, et al. Cost-effectiveness of noninvasive screening for alcohol-related liver fibrosis. *Hepatology* 2020;71(6): 2093–104.
130. Serra-Burriel M, Graupera I, Torán P, et al. Transient elastography for screening of liver fibrosis: Cost-effectiveness analysis from six prospective cohorts in Europe and Asia. *J Hepatol* 2019;71(6):1141–51.
131. Aberg F, Helenius-Hietala J, Puukka P, et al. Binge drinking and the risk of liver events: A population-based cohort study. *Liver Int* 2017;37(9):1373–81.
132. Louvet A, Labreuche J, Artru F, et al. Main drivers of outcome differ between short term and long term in severe alcoholic hepatitis: A prospective study. *Hepatology* 2017;66(5):1464–73.
133. Lackner C, Spindelboeck W, Haybaeck J, et al. Histological parameters and alcohol abstinence determine long-term prognosis in patients with alcoholic liver disease. *J Hepatol* 2017;66(3):610–8.
134. Peeraphatdit TB, Kamath PS, Karpyak VM, et al. Alcohol rehabilitation within 30 Days of hospital discharge is associated with reduced

- readmission, relapse, and death in patients with alcoholic hepatitis. *Clin Gastroenterol Hepatol* 2020;18(2):477–85.e5.
135. Singal AK, DiMartini A, Leggio L, et al. Identifying alcohol use disorder in patients with cirrhosis reduces 30-days readmission rate. *Alcohol Alcohol* 2022;57(5):576–80.
 136. Rabiee A, Mahmud N, Falker C, et al. Medications for alcohol use disorder improve survival in patients with hazardous drinking and alcohol-associated cirrhosis. *Hepatol Commun* 2023;7(4):e0093.
 137. Elfeki MA, Abdallah MA, Leggio L, et al. Simultaneous management of alcohol use disorder and liver disease: A systematic review and meta-analysis. *J Addict Med* 2023;17(2):e119–28.
 138. Khan A, Tansel A, White DL, et al. Efficacy of psychosocial interventions in inducing and maintaining alcohol abstinence in patients with chronic liver disease: A systematic review. *Clin Gastroenterol Hepatol* 2016;14(2):191–202.e1–4; quiz e20.
 139. Addolorato G, Mirijello A, Leggio L, et al. Liver transplantation in alcoholic patients: Impact of an alcohol addiction unit within a liver transplant center. *Alcohol Clin Exp Res* 2013;37(9):1601–8.
 140. Ganne-Carrié N, Nahon P. Hepatocellular carcinoma in the setting of alcohol-related liver disease. *J Hepatol* 2019;70(2):284–93.
 141. Mancebo A, González-Diéguez ML, Cadahía V, et al. Annual incidence of hepatocellular carcinoma among patients with alcoholic cirrhosis and identification of risk groups. *Clin Gastroenterol Hepatol* 2013;11(1):95–101.
 142. Huang DQ, Tan DJH, Ng CH, et al. Hepatocellular carcinoma incidence in alcohol-associated cirrhosis: Systematic review and meta-analysis. *Clin Gastroenterol Hepatol* 2023;21(5):1169–77.
 143. Heimbach JK, Kulik LM, Finn RS, et al. AASLD guidelines for the treatment of hepatocellular carcinoma. *Hepatology* 2018;67(1):358–80.
 144. Drenth JP, Montagnese S. First evidence-based guidelines for the diagnosis and management of hepatic encephalopathy: A welcome development. *J Hepatol* 2015;62(6):1457.
 145. Galvin R, Bräthen G, Ivashynka A, et al. EFNS guidelines for diagnosis, therapy and prevention of Wernicke encephalopathy. *Eur J Neurol* 2010;17(12):1408–18.
 146. Dingwall KM, Delima JF, Binks P, et al. What is the optimum thiamine dose to treat or prevent Wernicke's encephalopathy or Wernicke-Korsakoff syndrome? Results of a randomized controlled trial. *Alcohol Clin Exp Res* 2022;46(6):1133–47.
 147. Singal AK, Charlton MR. Nutrition in alcoholic liver disease. *Clin Liver Dis* 2012;16(4):805–26.
 148. Bischoff SC, Bernal W, Dasarathy S, et al. ESPEN practical guideline: Clinical nutrition in liver disease. *Clin Nutr* 2020;39(12):3533–62.
 149. Alukal JJ, Naqvi HA, Thuluvath PJ. Vaccination in chronic liver disease: An update. *J Clin Exp Hepatol* 2022;12(3):937–47.
 150. Crabb DW, Im GY, Szabo G, et al. Diagnosis and treatment of alcohol-associated liver diseases: 2019 practice guidance from the American association for the study of liver diseases. *Hepatology* 2020;71(1):306–33.
 151. Basra G, Basra S, Parupudi S. Symptoms and signs of acute alcoholic hepatitis. *World J Hepatol* 2011;3(5):118–20.
 152. Michelena J, Altamirano J, Abalde JG, et al. Systemic inflammatory response and serum lipopolysaccharide levels predict multiple organ failure and death in alcoholic hepatitis. *Hepatology* 2015;62(3):762–72.
 153. Jaruvongvanich V, Sanguankeo A, Upala S. Effect of SIRS and sepsis on mortality in alcoholic hepatitis: A systematic review and meta-analysis. *Turk J Gastroenterol* 2016;27(5):458–63.
 154. Maiwall R, Chandel SS, Wani Z, et al. SIRS at admission is a predictor of AKI development and mortality in hospitalized patients with severe alcoholic hepatitis. *Dig Dis Sci* 2016;61(3):920–9.
 155. Singal AK, Shah VH. Alcoholic hepatitis: Prognostic models and treatment. *Gastroenterol Clin North Am* 2011;40(3):611–39.
 156. Dunn W, Jamil LH, Brown LS, et al. MELD accurately predicts mortality in patients with alcoholic hepatitis. *Hepatology* 2005;41(2):353–8.
 157. Morales-Arráz D, Ventura-Cots M, Altamirano J, et al. The MELD score is superior to the Maddrey discriminant function score to predict short-term mortality in alcohol-associated hepatitis: A global study. *Am J Gastroenterol* 2022;117(2):301–10.
 158. Papastergiou V, Tsochatzis EA, Pieri G, et al. Nine scoring models for short-term mortality in alcoholic hepatitis: Cross-validation in a biopsy-proven cohort. *Aliment Pharmacol Ther* 2014;39(7):721–32.
 159. Louvet A, Labreuche J, Moreno C, et al. Early liver transplantation for severe alcohol-related hepatitis not responding to medical treatment: A prospective controlled study. *Lancet Gastroenterol Hepatol* 2022;7(5):416–25.
 160. Thursz MR, Richardson P, Allison M, et al. Prednisolone or pentoxifylline for alcoholic hepatitis. *N Engl J Med* 2015;372(17):1619–28.
 161. Musto J, Stanfield D, Ley D, et al. Recovery and outcomes of patients denied early liver transplantation for severe alcohol-associated hepatitis. *Hepatology* 2022;75(1):104–14.
 162. Bennett K, Enki DG, Thursz M, et al. Systematic review with meta-analysis: High mortality in patients with non-severe alcoholic hepatitis. *Aliment Pharmacol Ther* 2019;50(3):249–57.
 163. Samala N, Gawrieh S, Tang Q, et al. Clinical characteristics and outcomes of mild to moderate alcoholic hepatitis. *GastroHep* 2019;1(4):161–5.
 164. Clemente-Sánchez A, Oliveira-Mello A, Bataller R. Moderate alcoholic hepatitis. *Clin Liver Dis* 2021;25(3):537–55.
 165. Altamirano J, López-Pelayo H, Michelena J, et al. Alcohol abstinence in patients surviving an episode of alcoholic hepatitis: Prediction and impact on long-term survival. *Hepatology* 2017;66(6):1842–53.
 166. Maddrey WC, Boitnott JK, Bedine MS, et al. Corticosteroid therapy of alcoholic hepatitis. *Gastroenterology* 1978;75(2):193–9.
 167. Gholam PM. Prognosis and prognostic scoring models for alcoholic liver disease and acute alcoholic hepatitis. *Clin Liver Dis* 2016;20(3):491–7.
 168. Sheth M, Riggs M, Patel T. Utility of the Mayo End-Stage Liver Disease (MELD) score in assessing prognosis of patients with alcoholic hepatitis. *BMC Gastroenterol* 2002;2:2.
 169. Forrest EH, Atkinson SR, Richardson P, et al. Application of prognostic scores in the STOPAH trial: Discriminant function is no longer the optimal scoring system in alcoholic hepatitis. *J Hepatol* 2018;68(3):511–8.
 170. Geetha S, Kollipara R, Rao K. Comparative assessment of validated prognostic models in estimation of 30 day mortality in alcoholic hepatitis. *J Clin Diagn Res* 2018;12:OC09–OC13.
 171. Bozin T, Rob Z, Lucijanac M, et al. Comparison of prognostic scores for alcoholic hepatitis: A retrospective study. *Croat Med J* 2021;62(1):17–24.
 172. Kim HY, Kim CW, Kim TY, et al. Assessment of scoring systems for acute-on-chronic liver failure at predicting short-term mortality in patients with alcoholic hepatitis. *World J Gastroenterol* 2016;22(41):9205–13.
 173. Díaz LA, Fuentes-López E, Ayares G, et al. MELD 3.0 adequately predicts mortality and renal replacement therapy requirements in patients with alcohol-associated hepatitis. *JHEP Rep* 2023;5(8):100727.
 174. Andrade P, Silva M, Rodrigues S, et al. Alcoholic hepatitis histological score has high accuracy to predict 90-day mortality and response to steroids. *Dig Liver Dis* 2016;48(6):656–60.
 175. Forrest E, Petts G, Austin A, et al. The diagnostic and prognostic significance of liver histology in alcoholic hepatitis. *Aliment Pharmacol Ther* 2021;53(3):426–31.
 176. Louvet A, Labreuche J, Artru F, et al. Combining data from liver disease scoring systems better predicts outcomes of patients with alcoholic hepatitis. *Gastroenterology* 2015;149(2):398–406.e8; quiz e16–7.
 177. Piano S, Tonon M, Vettore E, et al. Incidence, predictors and outcomes of acute-on-chronic liver failure in outpatients with cirrhosis. *J Hepatol* 2017;67(6):1177–84.
 178. Moreau R, Jalan R, Gines P, et al. Acute-on-chronic liver failure is a distinct syndrome that develops in patients with acute decompensation of cirrhosis. *Gastroenterology* 2013;144(7):1426–37, 1437.e1–9.
 179. Maiwall R, Pasupuleti SSR, Choudhury A, et al. AARC score determines outcomes in patients with alcohol-associated hepatitis: A multinational study. *Hepatol Int* 2023;17(3):662–75.
 180. Bajaj JS, O'Leary JG, Reddy KR, et al. Survival in infection-related acute-on-chronic liver failure is defined by extrahepatic organ failures. *Hepatology* 2014;60(1):250–6.
 181. Vergis N, Atkinson SR, Knapp S, et al. In patients with severe alcoholic hepatitis, prednisolone increases susceptibility to infection and infection-related mortality, and is associated with high circulating levels of bacterial DNA. *Gastroenterology* 2017;152(5):1068–77.e4.
 182. Hmoud BS, Patel K, Bataller R, et al. Corticosteroids and occurrence of and mortality from infections in severe alcoholic hepatitis: A meta-analysis of randomized trials. *Liver Int* 2016;36(5):721–8.
 183. Parker R, Im G, Jones F, et al. Clinical and microbiological features of infection in alcoholic hepatitis: An international cohort study. *J Gastroenterol* 2017;52(11):1192–200.

184. Jiménez C, Ventura-Cots M, Sala M, et al. Effect of rifaximin on infections, acute-on-chronic liver failure and mortality in alcoholic hepatitis: A pilot study (RIFA-AH). *Liver Int* 2022;42(5):1109–20.
185. Ahmed Z, Badal J, Nawras M, et al. Role of rifaximin in the management of alcohol-associated hepatitis: A systematic review and meta-analysis. *J Gastroenterol Hepatol* 2023;38(5):703–9.
186. Stoy S, Laursen TL, Eriksen LL, et al. No effect in alcoholic hepatitis of gut-selective, broad-spectrum antibiotics on bacterial translocation or hepatic and systemic inflammation. *Clin Transl Gastroenterol* 2021; 12(2):e00306.
187. Higuera-de la Tijera F, Servín-Caamaño A, Servín-Abad L, et al. Malnutrition is a key prognostic factor related to high mortality-rate in patients with severe alcoholic hepatitis. *Nutr Hosp* 2018;35(3):677–82.
188. Lee DU, Fan GH, Hastie DJ, et al. The impact of malnutrition on the hospital and infectious outcomes of patients admitted with alcoholic hepatitis: 2011 to 2017 analysis of US hospitals. *J Clin Gastroenterol* 2022;56(4):349–59.
189. Plauth M, Bernal W, Dasarathy S, et al. ESPEN guideline on clinical nutrition in liver disease. *Clin Nutr* 2019;38(2):485–521.
190. Mendenhall CL, Moritz TE, Roselle GA, et al. Protein energy malnutrition in severe alcoholic hepatitis: Diagnosis and response to treatment. The VA cooperative study group #275. *JPEN J Parenter Enteral Nutr* 1995;19(4):258–65.
191. Mendenhall CL, Tosch T, Weesner RE, et al. VA cooperative study on alcoholic hepatitis. II: Prognostic significance of protein-calorie malnutrition. *Am J Clin Nutr* 1986;43(2):213–8.
192. Moreno C, Deltenre P, Senterre C, et al. Intensive enteral nutrition is ineffective for patients with severe alcoholic hepatitis treated with corticosteroids. *Gastroenterology* 2016;150(4):903–10.e8.
193. Cabré E, Rodríguez-Iglesias P, Caballería J, et al. Short- and long-term outcome of severe alcohol-induced hepatitis treated with steroids or enteral nutrition: A multicenter randomized trial. *Hepatology* 2000; 32(1):36–42.
194. Bager P, Olesen L, Baltzer RL, et al. Equal efficacy of gastric and jejunal tube feeding in liver cirrhosis and/or alcoholic hepatitis: A randomised controlled study. *Br J Nurs* 2020;29(20):1148–54.
195. de Lédinghen V, Beau P, Mannant PR, et al. Early feeding or enteral nutrition in patients with cirrhosis after bleeding from esophageal varices? A randomized controlled study. *Dig Dis Sci* 1997;42(3): 536–41.
196. Simon D, Galambos JT. A randomized controlled study of peripheral parenteral nutrition in moderate and severe alcoholic hepatitis. *J Hepatol* 1988;7(2):200–7.
197. Nasrallah SM, Galambos JT. Amino acid therapy of alcoholic hepatitis. *Lancet* 1980;2(8207):1276–7.
198. Mezey E, Caballería J, Mitchell MC, et al. Effect of parenteral amino acid supplementation on short-term and long-term outcomes in severe alcoholic hepatitis: A randomized controlled trial. *Hepatology* 1991;14: 1090–6.
199. Calvey H, Davis M, Williams R. Controlled trial of nutritional supplementation, with and without branched chain amino acid enrichment, in treatment of acute alcoholic hepatitis. *J Hepatol* 1985; 1(2):141–51.
200. Mendenhall C, Bongiovanni G, Goldberg S, et al. VA Cooperative Study on Alcoholic Hepatitis. III: Changes in protein-calorie malnutrition associated with 30 days of hospitalization with and without enteral nutritional therapy. *JPEN J Parenter Enteral Nutr* 1985;9(5):590–6.
201. Antar R, Wong P, Ghali P. A meta-analysis of nutritional supplementation for management of hospitalized alcoholic hepatitis. *Can J Gastroenterol* 2012;26:463–7.
202. Dhanda A, Atkinson S, Vergis N, et al. Trace element deficiency is highly prevalent and associated with infection and mortality in patients with alcoholic hepatitis. *Aliment Pharmacol Ther* 2020;52(3):537–44.
203. Szabo G, Mitchell M, McClain CJ, et al. IL-1 receptor antagonist plus pentoxifylline and zinc for severe alcohol-associated hepatitis. *Hepatology* 2022;76(4):1058–68.
204. Helman RA, Temko MH, Nye SW, et al. Alcoholic hepatitis. Natural history and evaluation of prednisolone therapy. *Ann Intern Med* 1971; 74(3):311–21.
205. Pavlov CS, Varganova DL, Casazza G, et al. Glucocorticosteroids for people with alcoholic hepatitis. *Cochrane Database Syst Rev* 2019;4(4): CD001511.
206. Mendenhall CL, Anderson S, Garcia-Pont P, et al. Short-term and long-term survival in patients with alcoholic hepatitis treated with oxandrolone and prednisolone. *N Engl J Med* 1984;311(23):1464–70.
207. Ramond MJ, Poynard T, Rueff B, et al. A randomized trial of prednisolone in patients with severe alcoholic hepatitis. *N Engl J Med* 1992;326(8):507–12.
208. Carithers RL Jr, Herlong HF, Diehl AM, et al. Methylprednisolone therapy in patients with severe alcoholic hepatitis. A randomized multicenter trial. *Ann Intern Med* 1989;110(9):685–90.
209. Phillips M, Curtis H, Portmann B, et al. Antioxidants versus corticosteroids in the treatment of severe alcoholic hepatitis: A randomised clinical trial. *J Hepatol* 2006;44(4):784–90.
210. Mathurin P, O'Grady J, Carithers RL, et al. Corticosteroids improve short-term survival in patients with severe alcoholic hepatitis: meta-analysis of individual patient data. *Gut* 2011;60(2):255–60.
211. Louvet A, Thursz MR, Kim DJ, et al. Corticosteroids reduce risk of death within 28 days for patients with severe alcoholic hepatitis, compared with pentoxifylline or placebo—a meta-analysis of individual data from controlled trials. *Gastroenterology* 2018;155(2):458–68.e8.
212. Garcia-Saenz-de-Sicilia M, Duvoor C, Altamirano J, et al. A day-4 Lille model predicts response to corticosteroids and mortality in severe alcoholic hepatitis. *Am J Gastroenterol* 2017;112(2):306–15.
213. Foncea CG, Sporea I, Lupusoru R, et al. Day-4 Lille score is a good prognostic factor and early predictor in assessing therapy response in patients with liver cirrhosis and severe alcoholic hepatitis. *J Clin Med* 2021;10(11):2338.
214. Parker R, Cabezas J, Altamirano J, et al. Trajectory of serum bilirubin predicts spontaneous recovery in a real-world cohort of patients with alcoholic hepatitis. *Clin Gastroenterol Hepatol* 2022;20(2):e289–97.
215. Moreno AJ, Reeves TA, Turnbull GL. Hemangioma of bone. *Clin Nucl Med* 1988;13(10):768–9.
216. Louvet A, Wartel F, Castel H, et al. Infection in patients with severe alcoholic hepatitis treated with steroids: Early response to therapy is the key factor. *Gastroenterology* 2009;137(2):541–8.
217. Franchimont D, Kino T, Galon J, et al. Glucocorticoids and inflammation revisited: The state of the art. *NIH clinical staff conference. Neuroimmunomodulation* 2002;10(5):247–60.
218. Louvet A, Labreuche J, Dao T, et al. Effect of prophylactic antibiotics on mortality in severe alcohol-related hepatitis: A randomized clinical trial. *JAMA* 2023;329(18):1558–1566.
219. Reuter BK, Wallace JL. Phosphodiesterase inhibitors prevent NSAID enteropathy independently of effects on TNF-alpha release. *Am J Physiol* 1999;277(4):G847–54.
220. McClain CJ, Cohen DA. Increased tumor necrosis factor production by monocytes in alcoholic hepatitis. *Hepatology* 1989;9(3):349–51.
221. Akriviadis E, Botla R, Briggs W, et al. Pentoxifylline improves short-term survival in severe acute alcoholic hepatitis: A double-blind, placebo-controlled trial. *Gastroenterology* 2000;119(6):1637–48.
222. Singh S, Murad MH, Chandar AK, et al. Comparative effectiveness of pharmacological interventions for severe alcoholic hepatitis: A systematic review and network meta-analysis. *Gastroenterology* 2015;149(4):958–70.e12.
223. Louvet A, Diaz E, Dharancy S, et al. Early switch to pentoxifylline in patients with severe alcoholic hepatitis is inefficient in non-responders to corticosteroids. *J Hepatol* 2008;48(3):465–70.
224. Parker R, Armstrong MJ, Corbett C, et al. Systematic review: Pentoxifylline for the treatment of severe alcoholic hepatitis. *Aliment Pharmacol Ther* 2013;37(9):845–54.
225. Sidhu SS, Goyal O, Singla P, et al. Corticosteroid plus pentoxifylline is not better than corticosteroid alone for improving survival in severe alcoholic hepatitis (COPE trial). *Dig Dis Sci* 2012;57(6):1664–71.
226. Mathurin P, Louvet A, Duhamel A, et al. Prednisolone with vs without pentoxifylline and survival of patients with severe alcoholic hepatitis: A randomized clinical trial. *JAMA* 2013;310(10):1033–41.
227. Baig M, Walayat S, Dhillon S, et al. Efficacy of granulocyte colony stimulating factor in severe alcoholic hepatitis: A systematic review and meta-analysis. *Cureus* 2020;12(9):e10474.
228. Marot A, Singal AK, Moreno C, et al. Granulocyte colony-stimulating factor for alcoholic hepatitis: A systematic review and meta-analysis of randomised controlled trials. *JHEP Rep* 2020;2(5):100139.
229. Tayek JA, Stolz AA, Nguyen DV, et al. A phase II, multicenter, open-label, randomized trial of pegfilgrastim for patients with alcohol-associated hepatitis. *EclinicalMedicine* 2022;54:101689.

230. Mishra AK, Shasthry SM, Vashishtha C, et al. GCSF increases the steroid responsiveness and 90 day survival in severe alcoholic hepatitis patients: A randomised control trial. *Hepatology* 2022;76:S150. Abstract.
231. Stewart S, Prince M, Bassendine M, et al. A randomized trial of antioxidant therapy alone or with corticosteroids in acute alcoholic hepatitis. *J Hepatol* 2007;47(2):277–83.
232. Moreno C, Langlet P, Hittetelet A, et al. Enteral nutrition with or without N-acetylcysteine in the treatment of severe acute alcoholic hepatitis: A randomized multicenter controlled trial. *J Hepatol* 2010;53(6):1117–22.
233. Nguyen-Khac E, Thevenot T, Piquet MA, et al. Glucocorticoids plus N-acetylcysteine in severe alcoholic hepatitis. *N Engl J Med* 2011;365(19):1781–9.
234. Amjad W, Alulak J, Doycheva I, et al. A combination of N-acetylcysteine and prednisone has no benefit over prednisone alone in severe alcoholic hepatitis: A retrospective analysis. *Dig Dis Sci* 2020;65(12):3726–33.
235. Naveau S, Chollet-Martin S, Dharasy S, et al. A double-blind randomized controlled trial of infliximab associated with prednisolone in acute alcoholic hepatitis. *Hepatology* 2004;39(5):1390–7.
236. Boetticher NC, Peine CJ, Kwo P, et al. A randomized, double-blinded, placebo-controlled multicenter trial of etanercept in the treatment of alcoholic hepatitis. *Gastroenterology* 2008;135(6):1953–60.
237. Akerman P, Cote P, Yang SQ, et al. Antibodies to tumor necrosis factor- α inhibit liver regeneration after partial hepatectomy. *Am J Physiol* 1992;263(4 Pt 1):G579–85.
238. Gupta H, Kim SH, Kim SK, et al. Beneficial shifts in gut microbiota by *Lactocaseibacillus rhamnosus* R0011 and *Lactobacillus helveticus* R0052 in alcoholic hepatitis. *Microorganisms* 2022;10(7):1474.
239. Han SH, Suk KT, Kim DJ, et al. Effects of probiotics (cultured *Lactobacillus subtilis*/*Streptococcus faecium*) in the treatment of alcoholic hepatitis: Randomized-controlled multicenter study. *Eur J Gastroenterol Hepatol* 2015;27(11):1300–6.
240. Kirpich IA, Solovieva NV, Leikhter SN, et al. Probiotics restore bowel flora and improve liver enzymes in human alcohol-induced liver injury: A pilot study. *Alcohol* 2008;42(8):675–82.
241. Philips CA, Pande A, Shasthry SM, et al. Healthy donor fecal microbiota transplantation in steroid-ineligible severe alcoholic hepatitis: A pilot study. *Clin Gastroenterol Hepatol* 2017;15(4):600–2.
242. Pande A, Sharma S, Khillan V, et al. Fecal microbiota transplantation compared with prednisolone in severe alcoholic hepatitis patients: A randomized trial. *Hepatol Int* 2023;17(1):249–61.
243. DeFilipp Z, Bloom PP, Torres Soto M, et al. Drug-resistant *E. coli* bacteremia transmitted by fecal microbiota transplant. *N Engl J Med* 2019;381(21):2043–50.
244. Mezey E, Potter JJ, Rennie-Tankersley L, et al. A randomized placebo controlled trial of vitamin E for alcoholic hepatitis. *J Hepatol* 2004;40(1):40–6.
245. Tkachenko P, Maevskaya M, Pavlov A, et al. Prednisolone plus S-adenosyl-L-methionine in severe alcoholic hepatitis. *Hepatol Int* 2016;10(6):983–7.
246. Fang JW, Bird GL, Nakamura T, et al. Hepatocyte proliferation as an indicator of outcome in acute alcoholic hepatitis. *Lancet* 1994;343(8901):820–3.
247. Dubuquoy L, Louvet A, Lassailly G, et al. Progenitor cell expansion and impaired hepatocyte regeneration in explanted livers from alcoholic hepatitis. *Gut* 2015;64(12):1949–60.
248. Trinchet JC, Balkau B, Poupon RE, et al. Treatment of severe alcoholic hepatitis by infusion of insulin and glucagon: A multicenter sequential trial. *Hepatology* 1992;15(1):76–81.
249. Bird G, Lau JY, Koskinas J, et al. Insulin and glucagon infusion in acute alcoholic hepatitis: A prospective randomized controlled trial. *Hepatology* 1991;14(6):1097–101.
250. Rambaldi A, Iaquinto G, Gluud C. Anabolic-androgenic steroids for alcoholic liver disease: A Cochrane review. *Am J Gastroenterol* 2002;97(7):1674–81.
251. Orrego H, Israel Y. Propylthiouracil treatment for alcoholic hepatitis: The case of the missing thirty. *Gastroenterology* 1982;83(4):945–6.
252. Bañares R, Nevens F, Larsen FS, et al. Extracorporeal albumin dialysis with the molecular adsorbent recirculating system in acute-on-chronic liver failure: The RELIEF trial. *Hepatology* 2013;57(3):1153–62.
253. Kumar SE, Goel A, Zachariah U, et al. Low volume plasma exchange and low dose steroid improve survival in patients with alcohol-related acute on chronic liver failure and severe alcoholic hepatitis—preliminary experience. *J Clin Exp Hepatol* 2022;12(2):372–8.
254. Mathurin P, Moreno C, Samuel D, et al. Early liver transplantation for severe alcoholic hepatitis. *N Engl J Med* 2011;365(19):1790–800.
255. Lee BP, Mehta N, Platt L, et al. Outcomes of early liver transplantation for patients with severe alcoholic hepatitis. *Gastroenterology* 2018;155(2):422–30.e1.
256. Singal AK, Bashar H, Anand BS, et al. Outcomes after liver transplantation for alcoholic hepatitis are similar to alcoholic cirrhosis: Exploratory analysis from the UNOS database. *Hepatology* 2012;55(5):1398–405.
257. Marot A, Dubois M, Trépo E, et al. Liver transplantation for alcoholic hepatitis: A systematic review with meta-analysis. *PLoS One* 2018;13(1):e0190823.
258. Lee BP, Im GY, Rice JP, et al. Patterns of alcohol use after early liver transplantation for alcoholic hepatitis. *Clin Gastroenterol Hepatol* 2022;20(2):409–18.e5.
259. Kodali S, Kaif M, Tariq R, et al. Alcohol relapse after liver transplantation for alcoholic cirrhosis—impact on liver graft and patient survival: A meta-analysis. *Alcohol Alcohol* 2018;53(2):166–72.
260. Choudhary NS, Saraf N, Dhampalwar S, et al. Poor outcomes after recidivism in living donor liver transplantation for alcohol-related liver disease. *J Clin Exp Hepatol* 2022;12(1):37–42.
261. McCallum S, Masterton G. Liver transplantation for alcoholic liver disease: A systematic review of psychosocial selection criteria. *Alcohol Alcohol* 2006;41(4):358–63.
262. Weinberg EM, Dukewich M, Jakhete N, et al. Early liver transplantation for severe alcohol-associated hepatitis and a history of prior liver decompensation. *Am J Gastroenterol* 2022;117(12):1990–8.
263. Dienstag A, Dienstag P, Mohan K, et al. An assessment of the psychosocial evaluation for early liver transplantation in patients with acute alcoholic hepatitis in the context of alcohol use disorder, a case-control study. *Subst Abuse* 2022;16:11782218221115659.
264. Singal AK, Duchini A. Liver transplantation in acute alcoholic hepatitis: Current status and future development. *World J Hepatol* 2011;3:215–8.
265. Mathurin P, Lucey MR. Liver transplantation in patients with alcohol-related liver disease: Current status and future directions. *Lancet Gastroenterol Hepatol* 2020;5:507–14.
266. Lee BP, Vittinghoff E, Hsu C, et al. Predicting low risk for sustained alcohol use after early liver transplant for acute alcoholic hepatitis: The sustained alcohol use post-liver transplant score. *Hepatology* 2019;69(4):1477–87.
267. Selim R, Zhou Y, Rupp LB, et al. Availability of Peth testing is associated with reduced eligibility for liver transplant among patients with alcohol-related liver disease. *Clin Transpl* 2022;36(5):e14595.
268. Faulkner CS, White CM, Manatsathit W, et al. Positive blood phosphatidylethanol concentration is associated with unfavorable waitlist-related outcomes for patients medically appropriate for liver transplantation. *Alcohol Clin Exp Res* 2022;46(4):581–8.
269. Carbonneau M, Jensen LA, Bain VG, et al. Alcohol use while on the liver transplant waiting list: A single-center experience. *Liver Transpl* 2010;16(1):91–7.
270. Webzell I, Ball D, Bell J, et al. Substance use by liver transplant candidates: An anonymous urinalysis study. *Liver Transpl* 2011;17(10):1200–4.
271. Carrique L, Quance J, Tan A, et al. Results of early transplantation for alcohol-related cirrhosis: Integrated addiction treatment with low rate of relapse. *Gastroenterology* 2021;161(6):1896–906.e2.
272. Sheron N. Alcohol and liver disease in Europe: Simple measures have the potential to prevent tens of thousands of premature deaths. *J Hepatol* 2016;64(4):957–67.
273. Mann RE, Smart RG, Stoduto G, et al. Alcohol consumption and problems among road rage victims and perpetrators. *J Stud Alcohol* 2004;65(2):161–8.
274. Chisholm D, Moro D, Bertram M, et al. Are the “best buys” for alcohol control still valid? An update on the comparative cost-effectiveness of alcohol control strategies at the global level. *J Stud Alcohol Drugs* 2018;79(4):514–22.
275. Gao B, Battaller R. Alcoholic liver disease: Pathogenesis and new therapeutic targets. *Gastroenterology* 2011;141(5):1572–85.
276. Diaz LA, Idalsoaga F, Fuentes-López E, et al. Impact of public health policies on alcohol-associated liver disease in Latin America: An ecological multinational study. *Hepatology* 2021;74(5):2478–90.
277. Parikh ND, Chung GS, Mellinger J, et al. Alcohol policies and alcohol-related liver disease mortality. *Gastroenterology* 2021;161(1):350–2.
278. Shen NT, Bray J, Wahid NA, et al. Evaluation of alcohol taxes as a public health opportunity to reduce liver transplant listings for alcohol-related liver disease. *Alcohol Clin Exp Res* 2020;44(11):2307–15.

279. Ventura-Cots M, Watts AE, Cruz-Lemini M, et al. Colder weather and fewer sunlight hours increase alcohol consumption and alcoholic cirrhosis worldwide. *Hepatology* 2019;69(5):1916–30.
280. Agriculture UDo, Services HDoHaH. Dietary Guidelines for Americans, 2020–2025. In Services TDoAaHaH, ed. 2020; 2020–2025 e2d. USDA Publication #: USDA-FNS-2020-2025-DGA; HHS Publication #: HHS-ODPHP-2020-2025-01-DGA-A.
281. Imbert-Bismut F, Naveau S, Morra R, et al. The diagnostic value of combining carbohydrate-deficient transferrin, fibrosis, and steatosis biomarkers for the prediction of excessive alcohol consumption. *Eur J Gastroenterol Hepatol* 2009;21(1):18–27.
282. Gonzalo P, Pecquet M, Bon C, et al. Clinical performance of the carbohydrate-deficient transferrin (CDT) assay by the Sebia Capillary2 system in case of cirrhosis. Interest of the Bio-Rad %CDT by HPLC test and Siemens N-Latex CDT kit as putative confirmatory methods. *Clin Chim Acta* 2012;413(7-8):712–8.
283. Fagan KJ, Irvine KM, McWhinney BC, et al. Diagnostic sensitivity of carbohydrate deficient transferrin in heavy drinkers. *BMC Gastroenterol* 2014;14:97.
284. Piano S, Marchioro L, Gola E, et al. Assessment of alcohol consumption in liver transplant candidates and recipients: The best combination of the tools available. *Liver Transpl* 2014;20(7):815–22.
285. Tamigniau A, Wallemacq P, Maisin D. Could trisialotransferrin be used as an additional biomarker to CDT in order to improve detection of chronic excessive alcohol intake? *Clin Biochem* 2014;47(13-14):1203–8.
286. Andresen-Streichert H, Beres Y, Weinmann W, et al. Improved detection of alcohol consumption using the novel marker phosphatidylethanol in the transplant setting: Results of a prospective study. *Transpl Int* 2017;30(6):611–20.
287. Stewart SH, Koch DG, Burgess DM, et al. Sensitivity and specificity of urinary ethyl glucuronide and ethyl sulfate in liver disease patients. *Alcohol Clin Exp Res* 2013;37(1):150–5.
288. Verbeek J, Crunelle CL, Leurquin-Sterk G, et al. Ethyl glucuronide in hair is an accurate biomarker of chronic excessive alcohol use in patients with alcoholic cirrhosis. *Clin Gastroenterol Hepatol* 2018; 16(3):454–6.
289. Stewart SH, Koch DG, Willner IR, et al. Validation of blood phosphatidylethanol as an alcohol consumption biomarker in patients with chronic liver disease. *Alcohol Clin Exp Res* 2014;38(6):1706–11.